



INTERNATIONAL GLIDING COMPETITION  
**PRIBINACUP2013**  
MARCH 30 – APRIL 6, 2013 NITRA, SLOVAKIA

# Self Briefing

# General



- Welcome to the self briefing for the 13th edition of Pribina Cup 2013 – international easter gliding competition
- This document is an attachement of Local procedures of Pribina Cup 2013

# Contents



1. Airport characteristics
2. Airport access
3. Airport organization
4. Grid & takeoff procedures
5. Finishig & landing procedures
6. Flight documentation delivering

# Airport Nitra

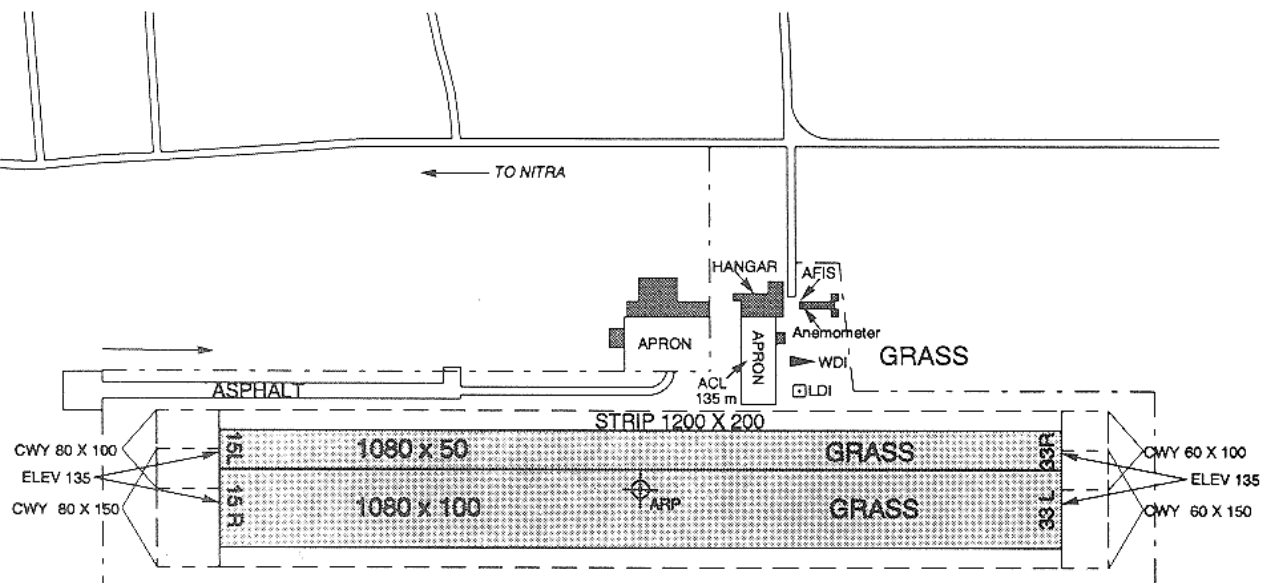


- Airport Nitra (**LZNI**) has a GPS co-ordinates:  
N481647  
E0180802,  
ELEV 135 m (443 ft)
- A local information radio frequency: **123.4 MHz („Nitra traffic“)**
- **Operational Runways:**
  - 33 RIGHT / 15 LEFT 1080 m X 50 m grass
  - 33 LEFT / 15 RIGHT 1080 m X 100 m grass
- SWY 1200 m X 200 m

Website: [www.airportnitra.sk](http://www.airportnitra.sk)

48°16'47" N  
018°08'02" E

**NITRA**

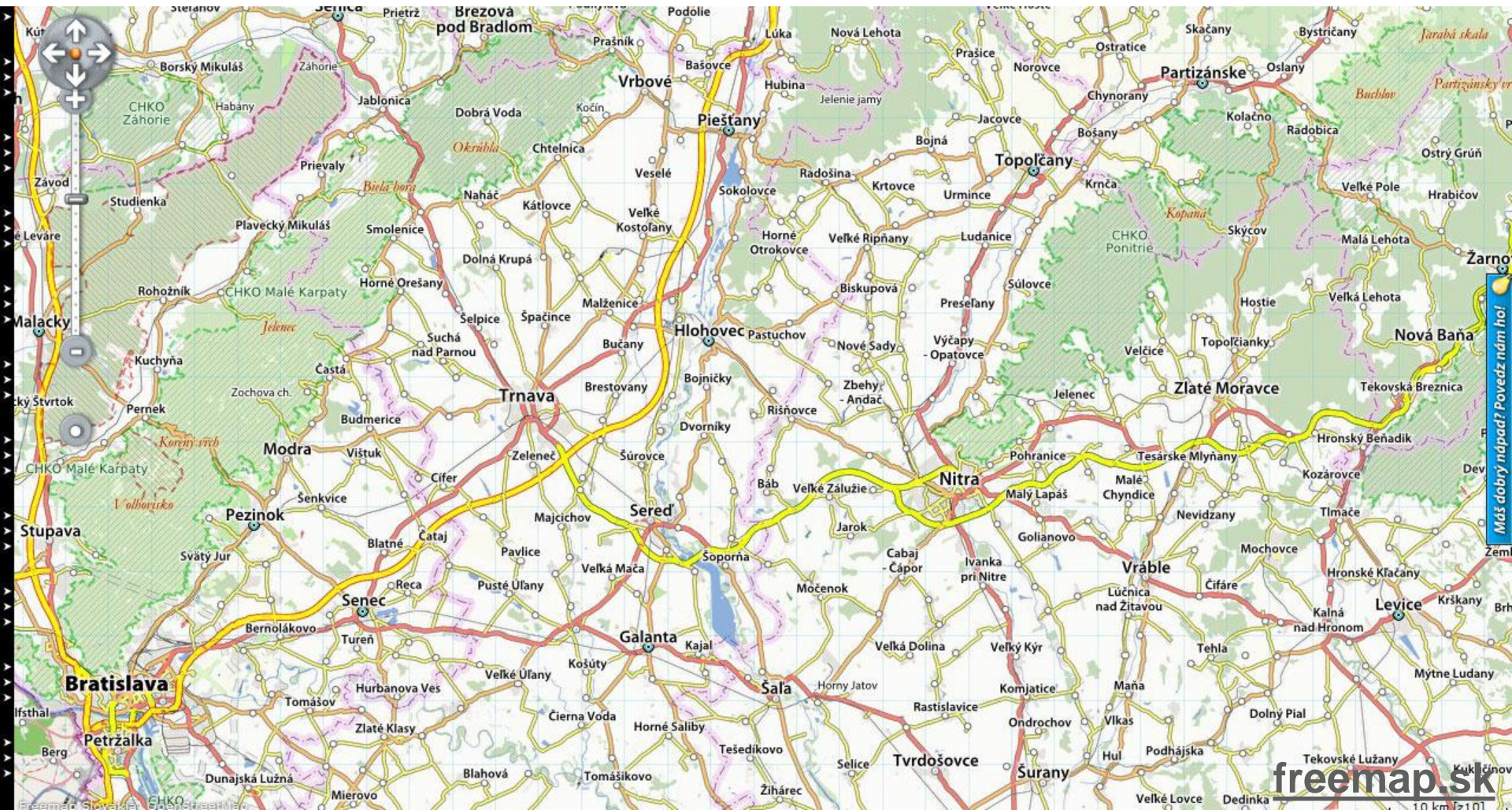
ANNUAL RATE  
OF CHANGE 4'E

FEET

RWY	TRUE BEARING	THR	BEARING STRENGTH
33 R	325°	48°16'57" N 018°08'19" E	5700 kg / 0,7 MPa
33 L	325°	48°16'50" N 018°08'19" E	
15 R	145°	48°16'59" N 018°07'42" E	
15 L	145°	48°16'52" N 018°07'42" E	

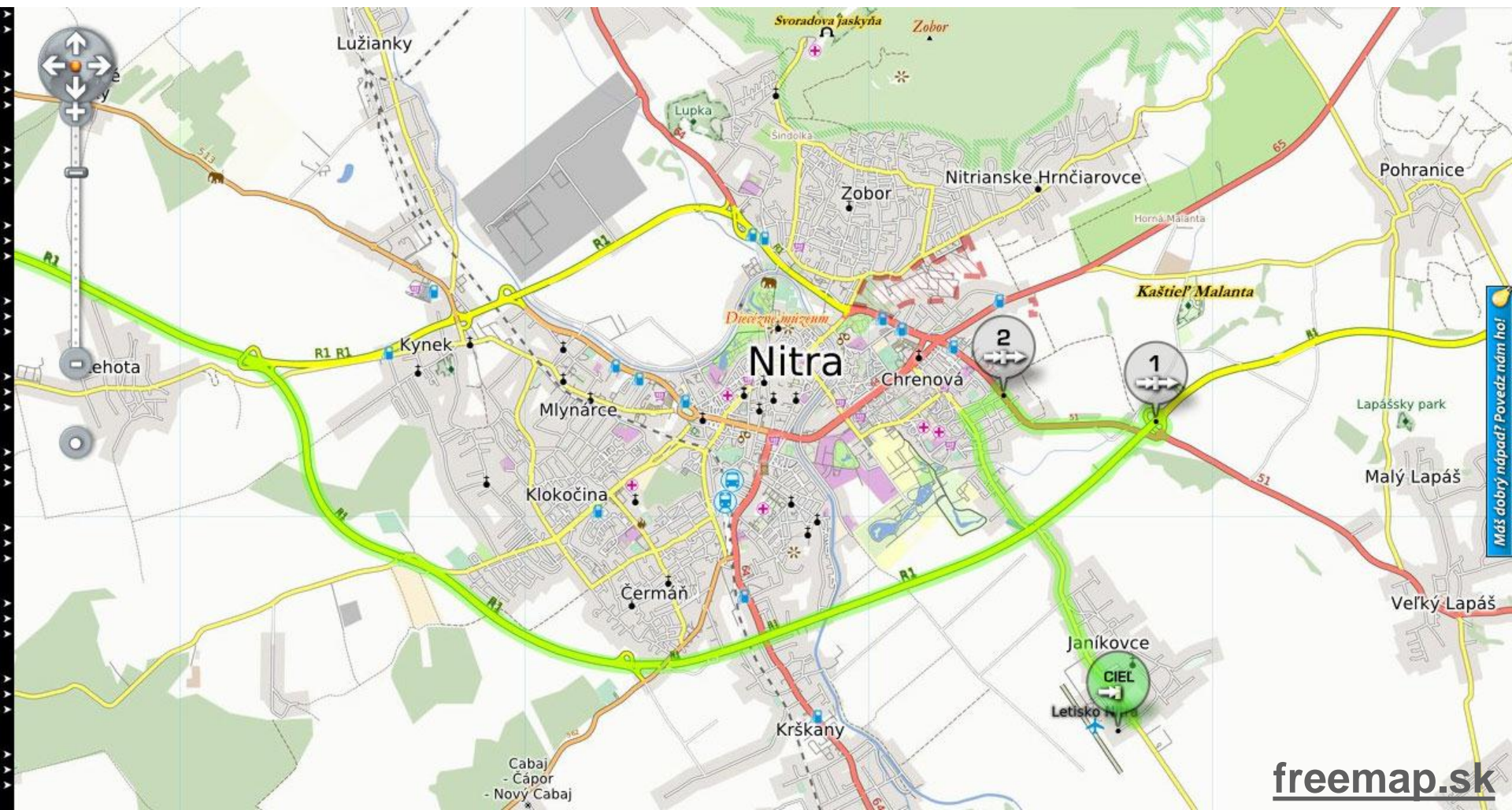


# The PR1BINA highway





# Access to the airport from the west (Bratislava)



# Airport organization





# Airport organization



- 4. Apron
- 5. Hangar & Briefing hall
- 6. Camping area
- 7. Info office & Scoring office
- 8. Bar
- 9. Dining room
- 10. Water ballast
- 11. Bungalows
- 12. Aero Slovakia complex
- 13. AeroPro

# Grid runway 33



1. NE grid (15m, 20m, Open)
2. SW grid (Club)
3. re-landing



1

3

33

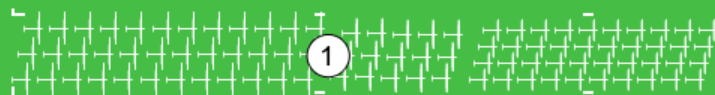
2



# Grid runway 15



1. NE grid (15m, 20m, Open)
2. SW grid (Club)
3. re-landing

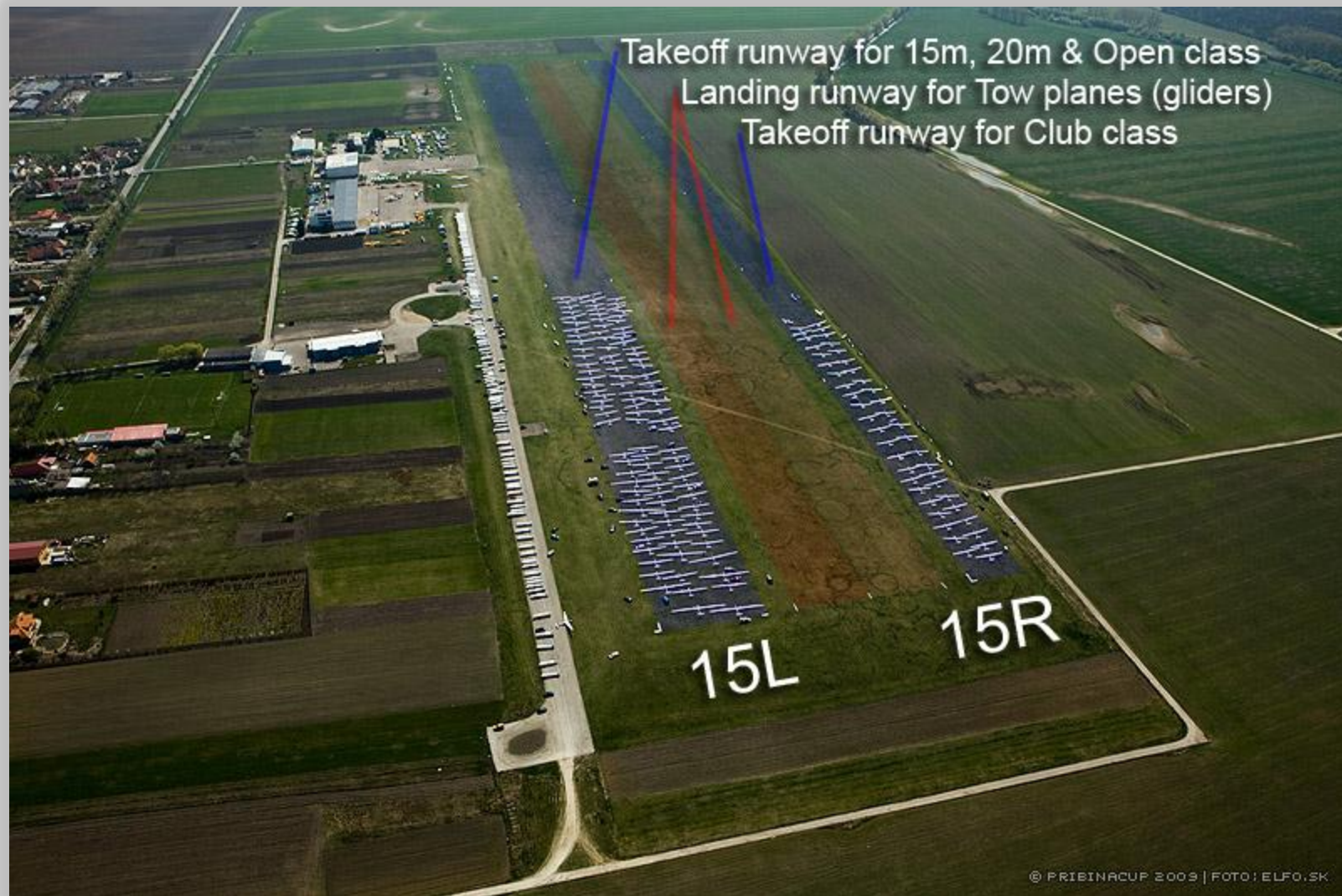


15

3







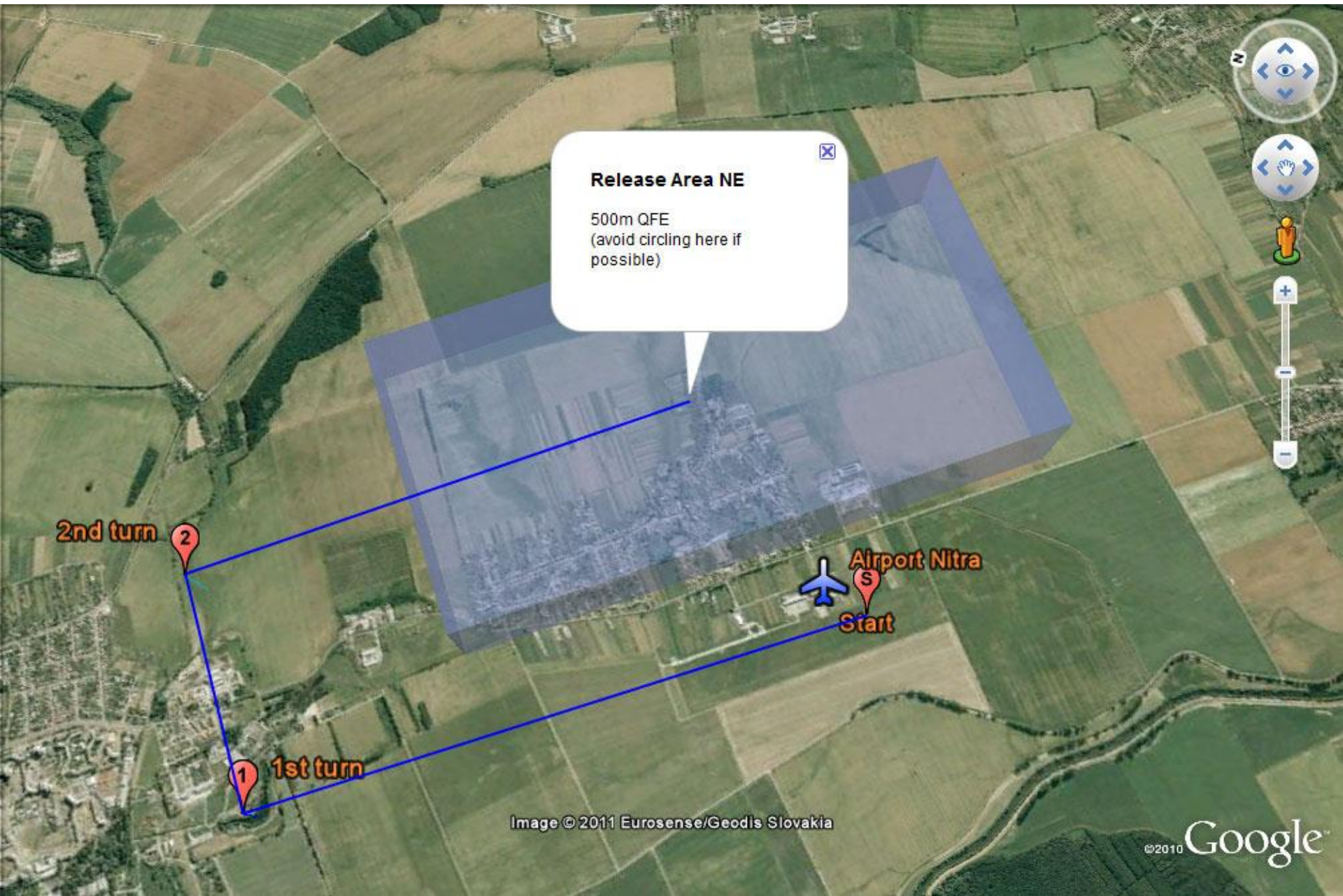
Takeoff runway for 15m, 20m & Open class  
Landing runway for Tow planes (gliders)  
Takeoff runway for Club class

15L

15R

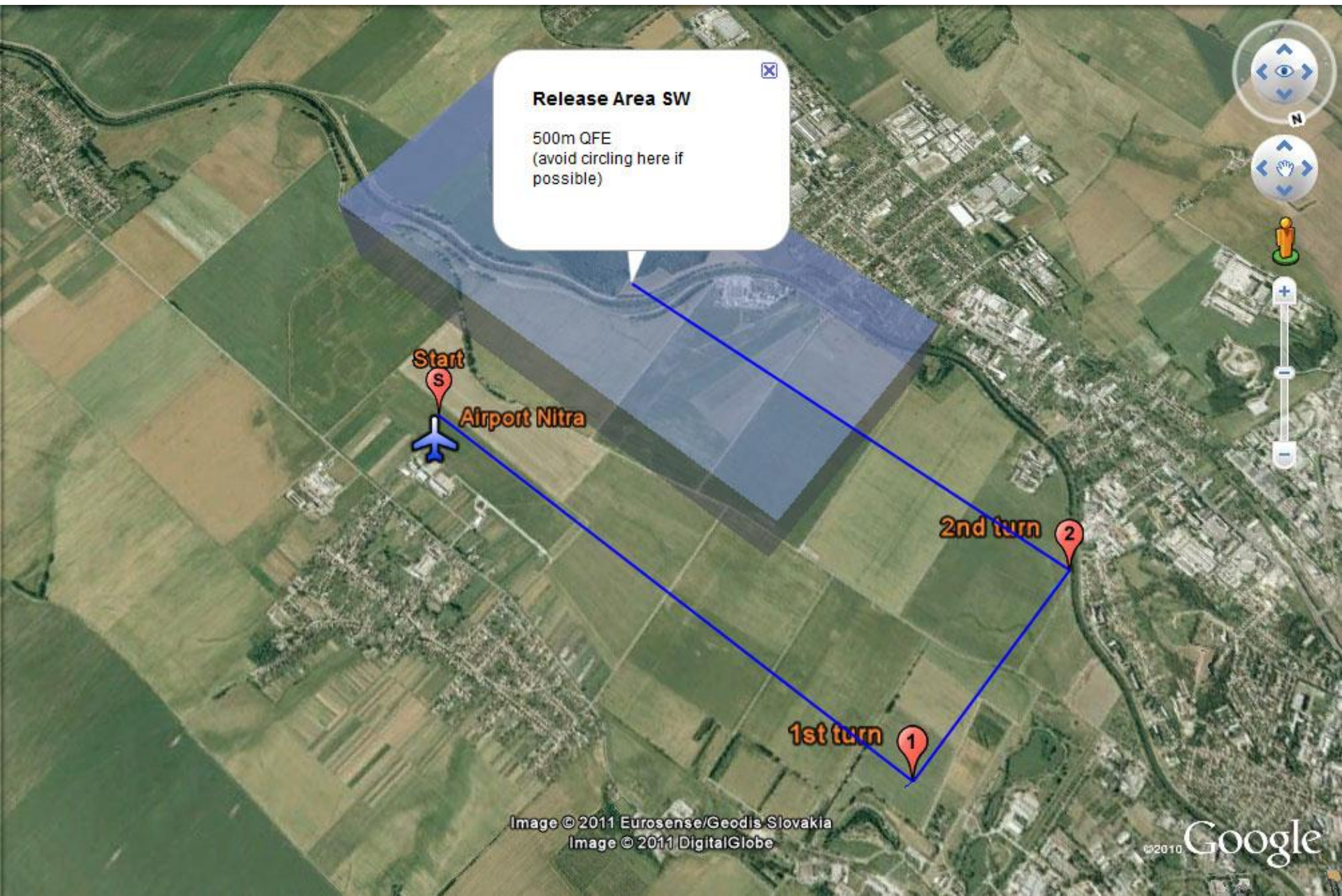


# Takeoff from runway 33: 15m, 20m Multi-Seat & Open class





# Takeoff from runway 33: Club class





# Takeoff from runway 15: 15m, 20m Multi-Seat & Open class





# Takeoff from runway 15: Club class



# Finishing procedures



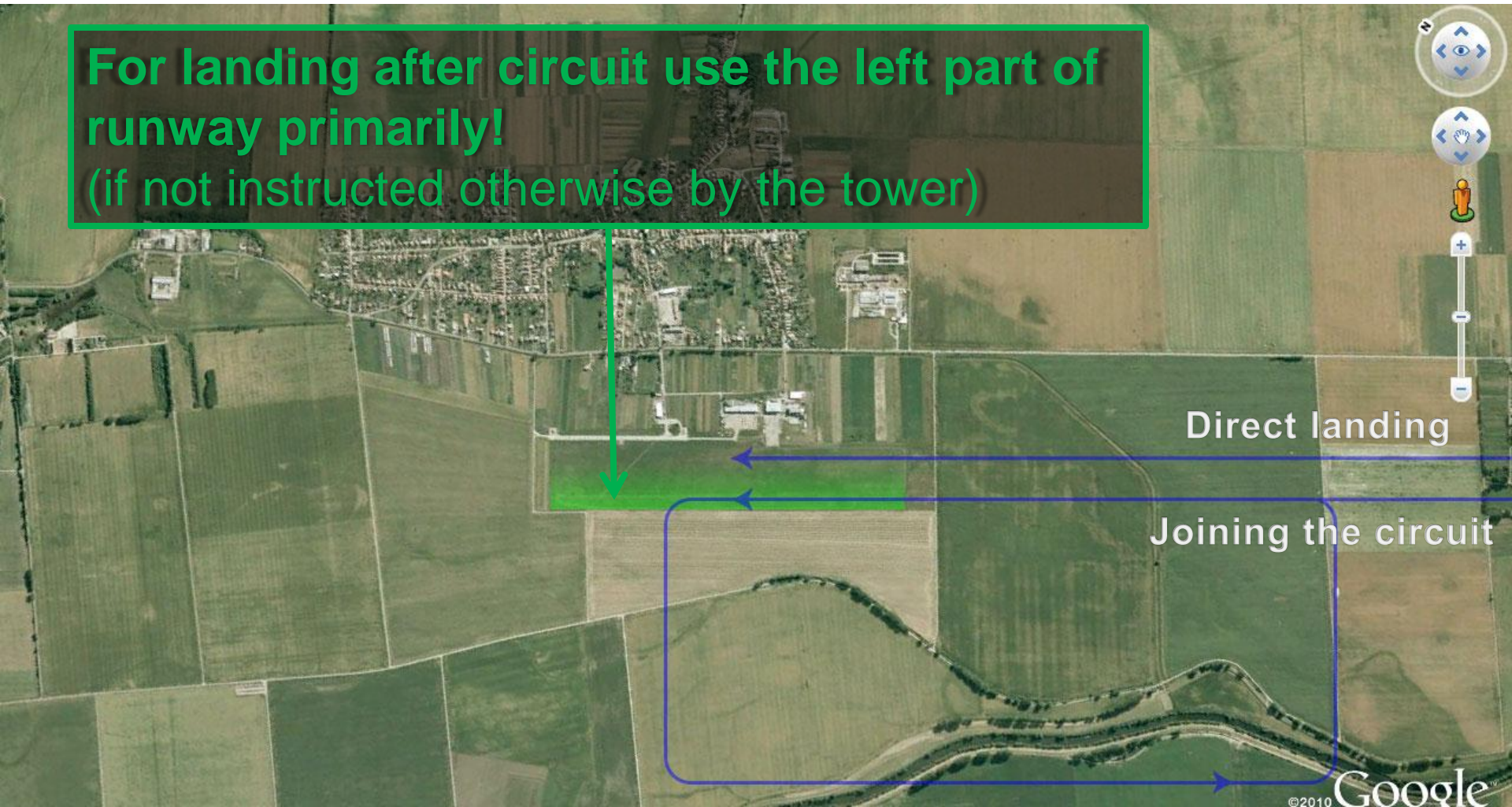
- Announcing of the arrivals will be done on the airport frequency 123.400 MHz. For announcing the arrivals the following phrases shall be used at the place specified at briefing:
  - [Competition number], [distance to finish line in km] - As soon as possible at 10km final or last control point of the task used for aligning the sailplanes in the same direction for the final.
- More information about finishing procedures in Local procedures



# Arrivals 33



For landing after circuit use the left part of runway primarily!  
(if not instructed otherwise by the tower)





# Arrivals 15



For landing after circuit use the right part of runway primarily!  
(if not instructed otherwise by the tower)

Direct landing

Joining the circuit



# Delivering IGC files



- It is required to download IGC files **by the competitors**
- There are three options how to deliver the file:
  - Attach it to an e-mail and send to [igc.pribinacup@gmail.com](mailto:igc.pribinacup@gmail.com) (recommended)
  - Upload via form on website
  - Or deliver it stored on (micro/mini/standard) SD card to the Info office
- **All Flight logs submitted must include Pilot ID and Contest Number in the IGC file**

[www.pribinacup.sk](http://www.pribinacup.sk)



**We are looking forward to see you in Nitra.**