



INTERNATIONAL GLIDING COMPETITION

PRIBINACUP 2012

APRIL 6–14, 2012 NITRA, SLOVAKIA

Self Briefing

www.pribinacup.sk

General



- Welcome to the self briefing for the 12th edition of Pribina Cup 2012 – international easter gliding competition
- This document is an attachement of Local procedures of Pribina Cup 2012

Contents



1. Airport characteristics
2. Airport access
3. Airport organization
4. Grid & takeoff procedures
5. Finishig & landing procedures
6. Flight documentation delivering

Airport Nitra



- Airport Nitra (**LZNI**) has a GPS co-ordinates:
N481647
E0180802,
ELEV 135 m (443 ft)
- A local information radio frequency: **123.4 MHz („Nitra traffic“)**
- **Operational Runways:**
 - 33 RIGHT / 15 LEFT 1080 m X 50 m grass
 - 33 LEFT / 15 RIGHT 1080 m X 100 m grass
- SWY 1200 m X 200 m

Website: www.airportnitra.sk

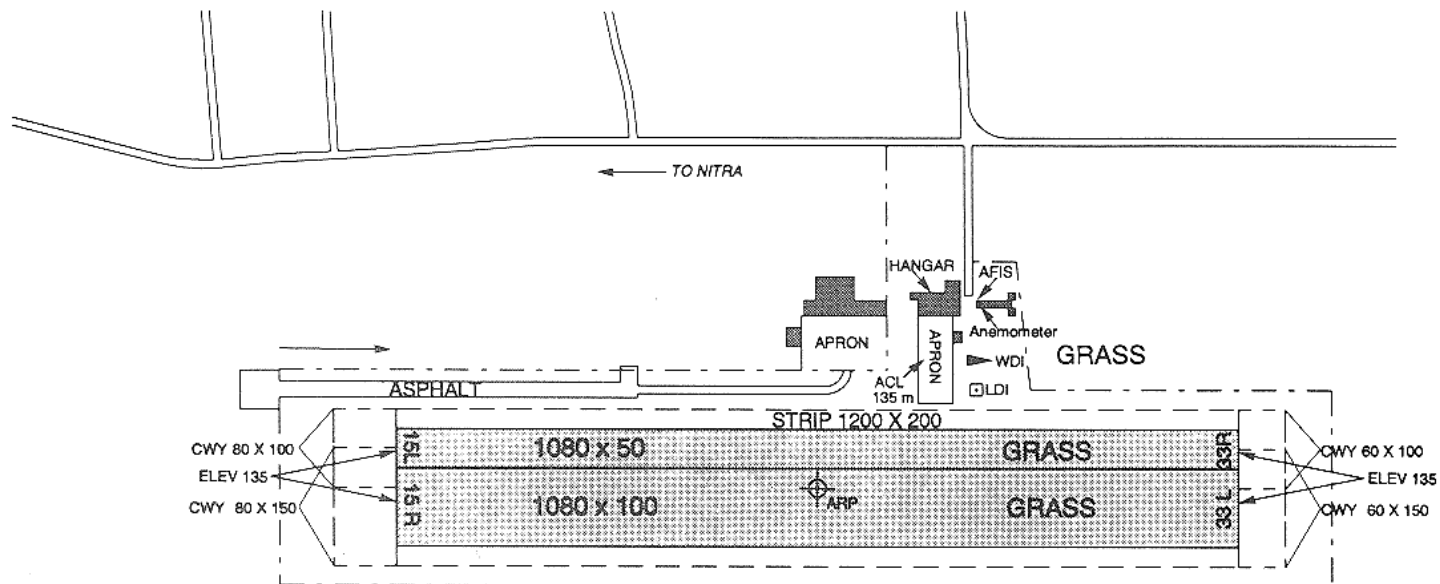
AERODROME CHART - ICAO

48°16'47" N
018°08'02" E

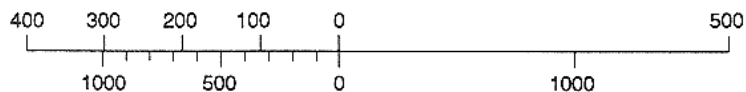
ELEV 135 m

NITRA

VAR 2°E 1996
ANNUAL RATE
OF CHANGE 4"E



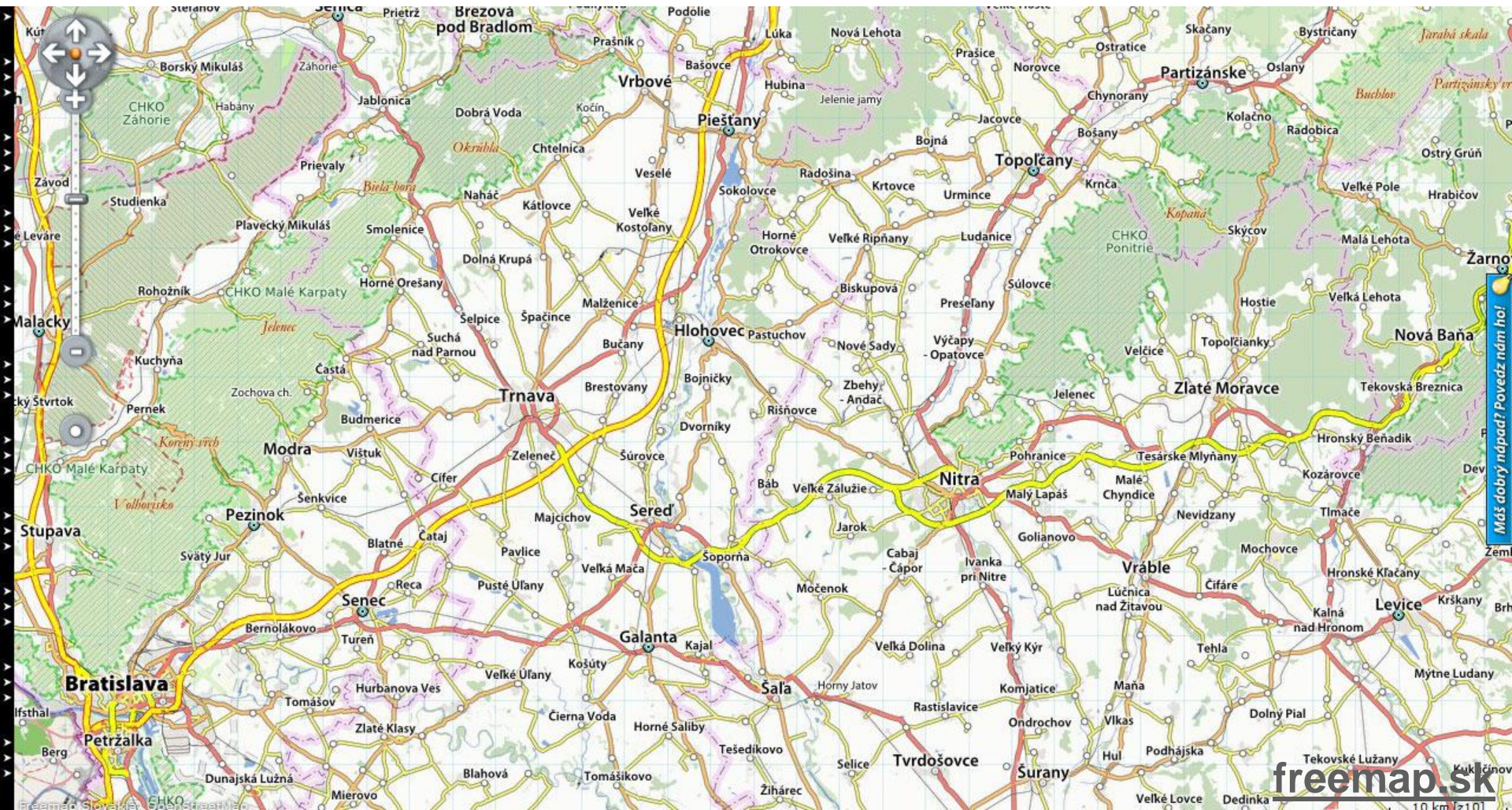
SCALE 1:10 000
METRES



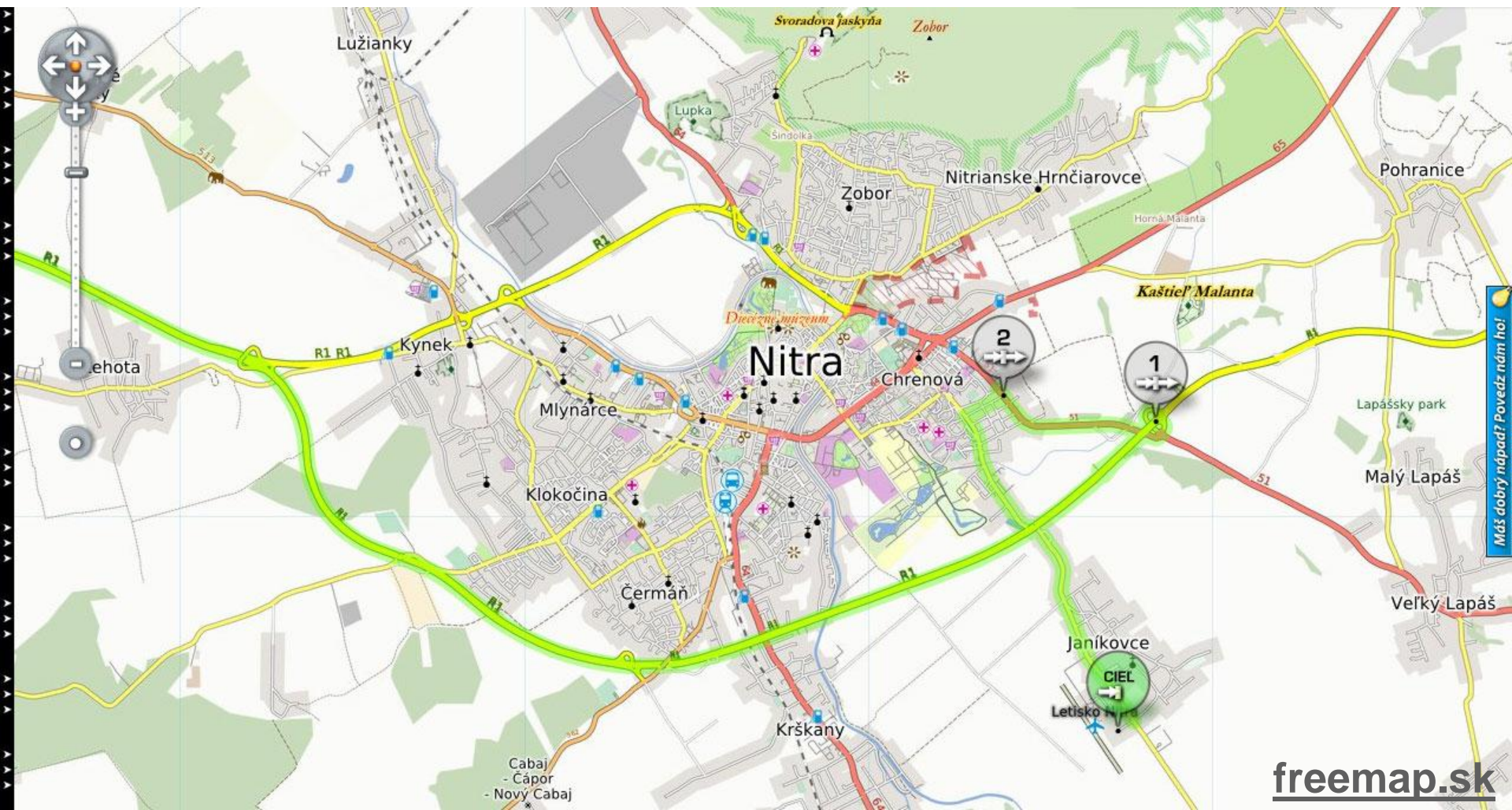
FEET

RWY	TRUE BEARING	THR	BEARING STRENGTH
33 R	325°	48°16'57" N 018°08'19" E	5700 kg / 0,7 MPa
33 L	325°	48°16'50" N 018°08'19" E	
15 R	145°	48°16'59" N 018°07'42" E	
15 L	145°	48°16'52" N 018°07'42" E	

The PR1BINA highway



Access to the airport from the west (Bratislava)



Airport organization



Airport organization



- 4. Apron
- 5. Hangar & Briefing hall
- 6. Camping area
- 7. Info office & Scoring office
- 8. Bar
- 9. Dining room
- 10. Water ballast
- 11. Bungalows
- 12. Aero Slovakia complex
- 13. AeroPro

Grid runway 33



1. NE grid (15m, 20m, Open)
2. SW grid (Club)
3. re-landing

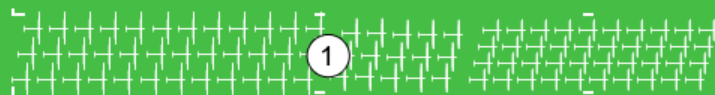




Grid runway 15



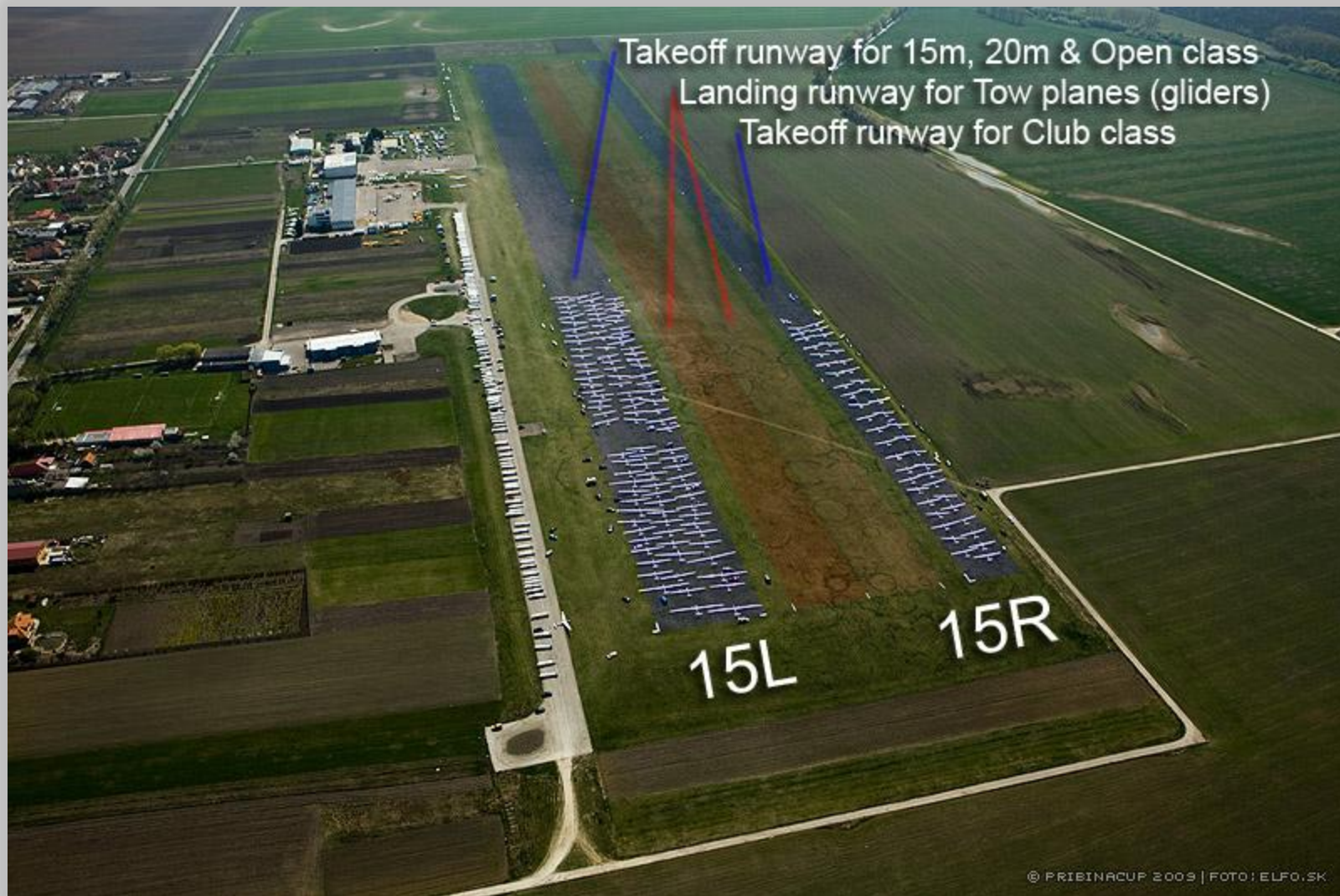
1. NE grid (15m, 20m, Open)
2. SW grid (Club)
3. re-landing



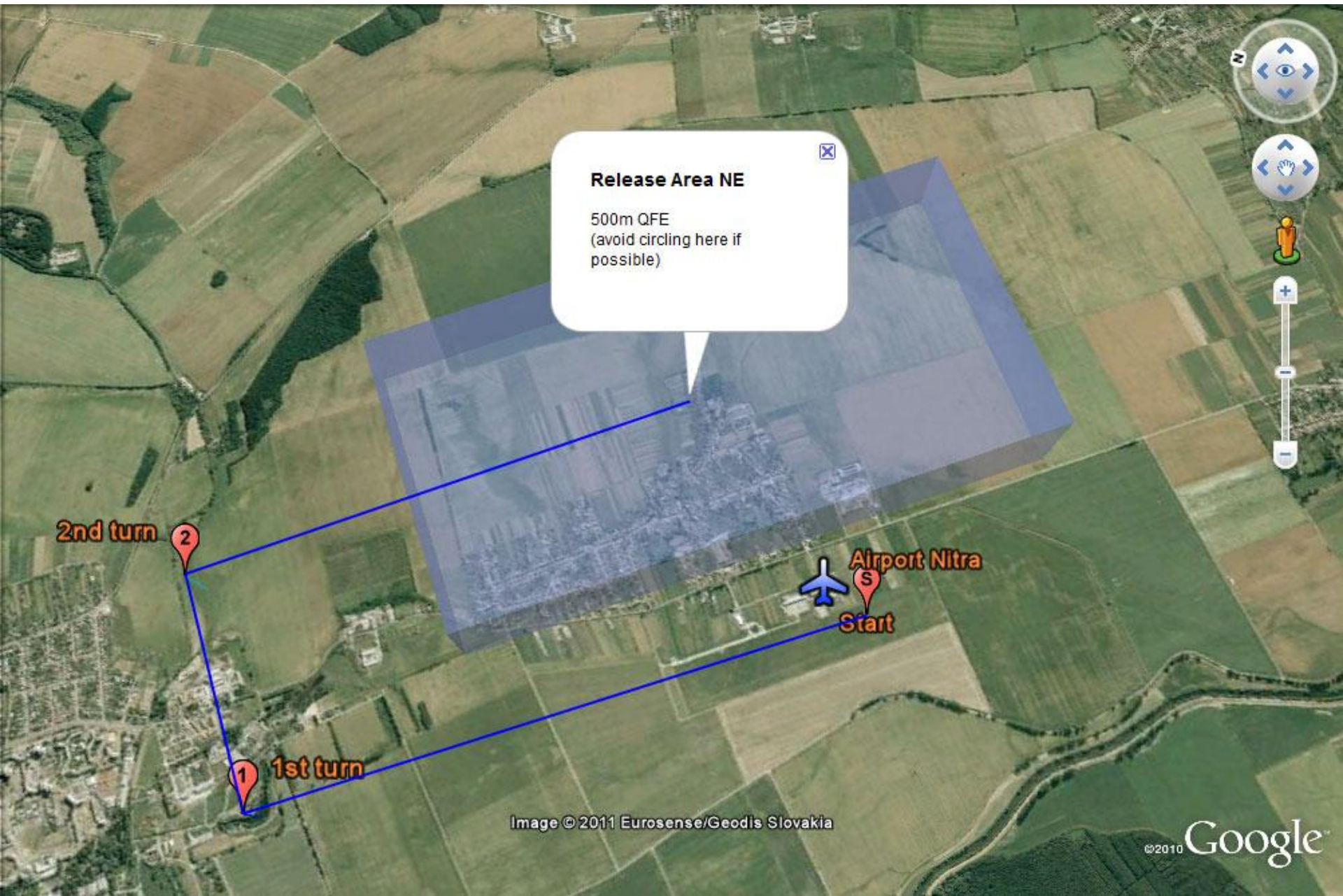
15

3

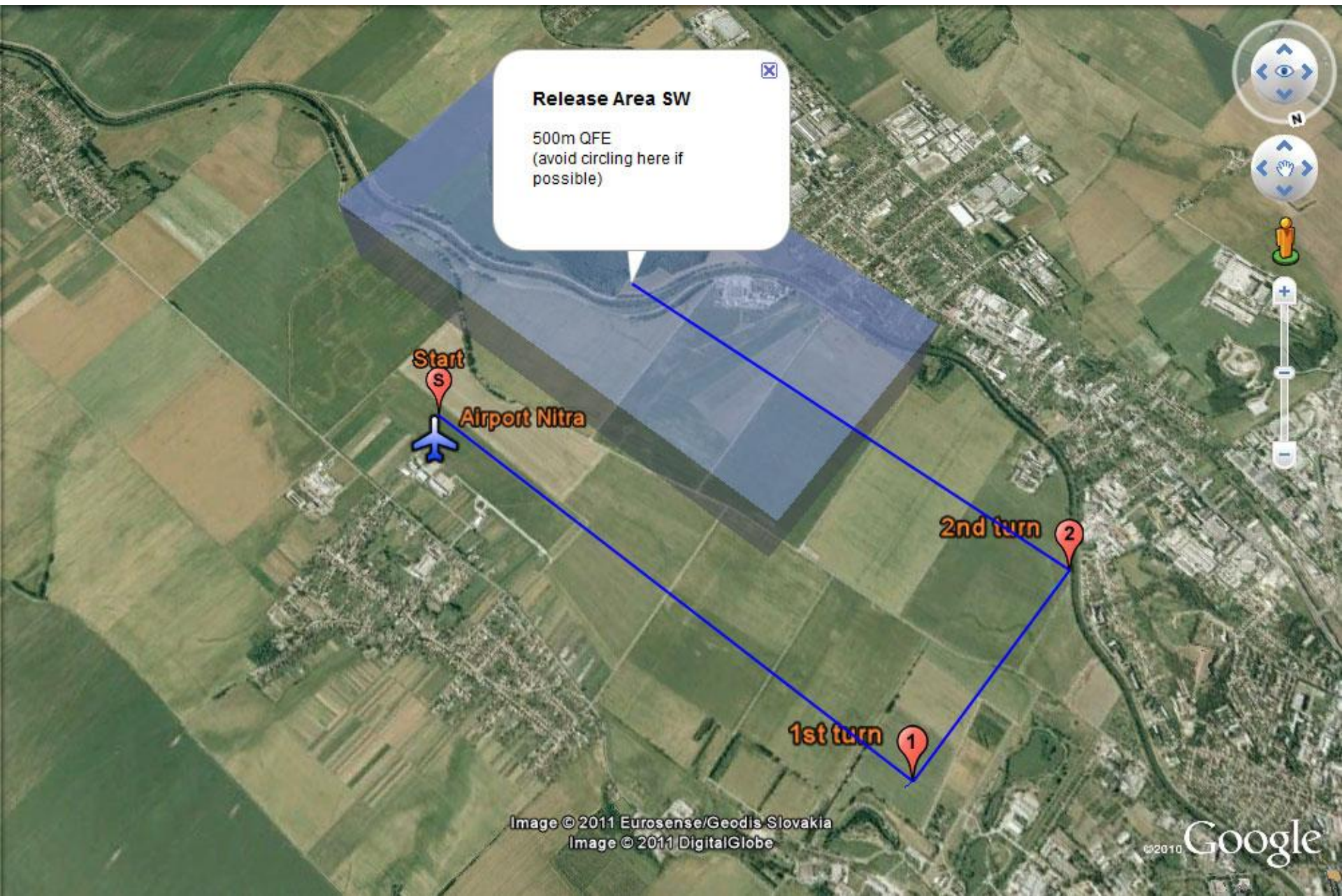




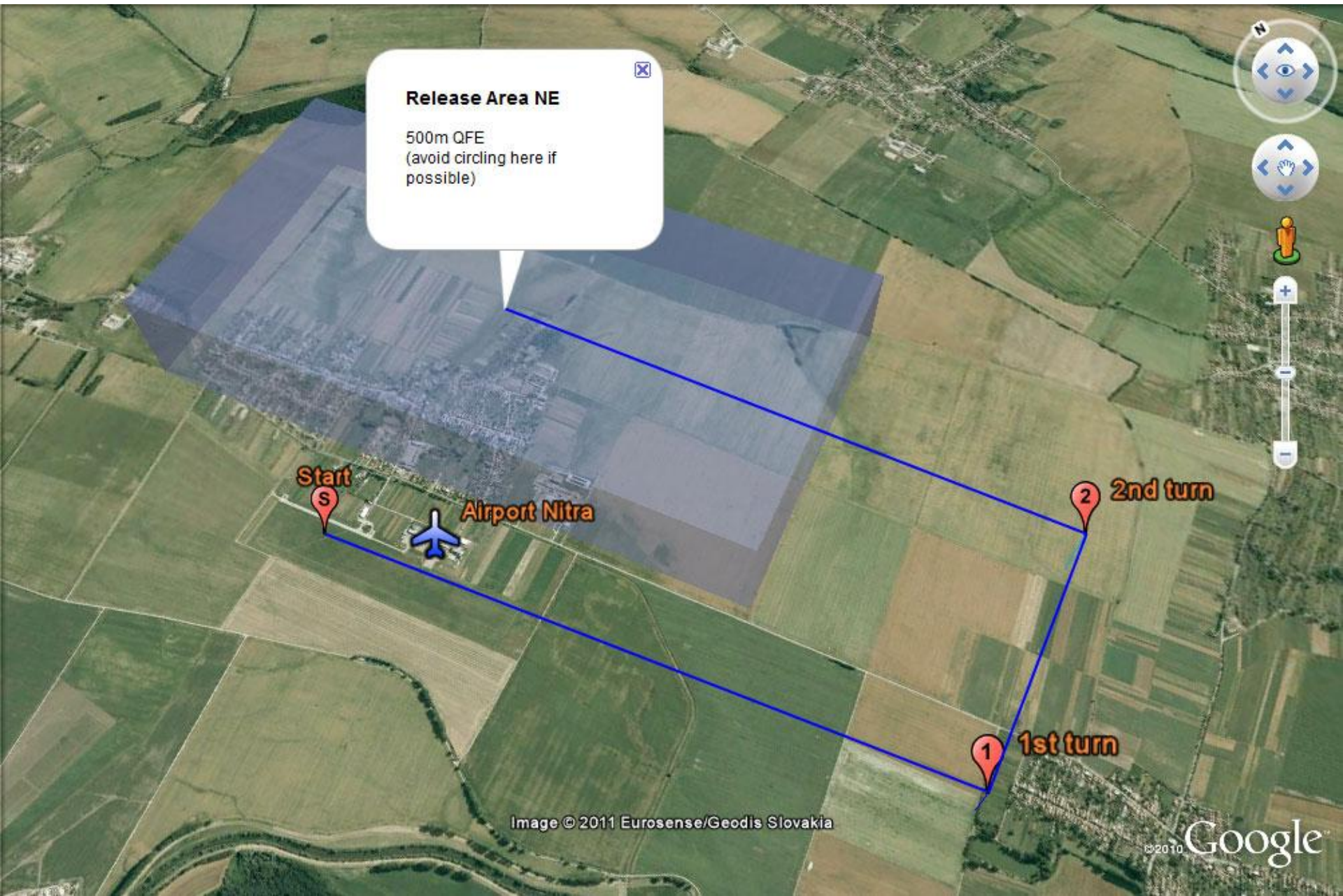
Takeoff from runway 33: 15m, 20m Multi-Seat & Open class



Takeoff from runway 33: Club class



Takeoff from runway 15: 15m, 20m Multi-Seat & Open class



Takeoff from runway 15: Club class



Finishing procedures

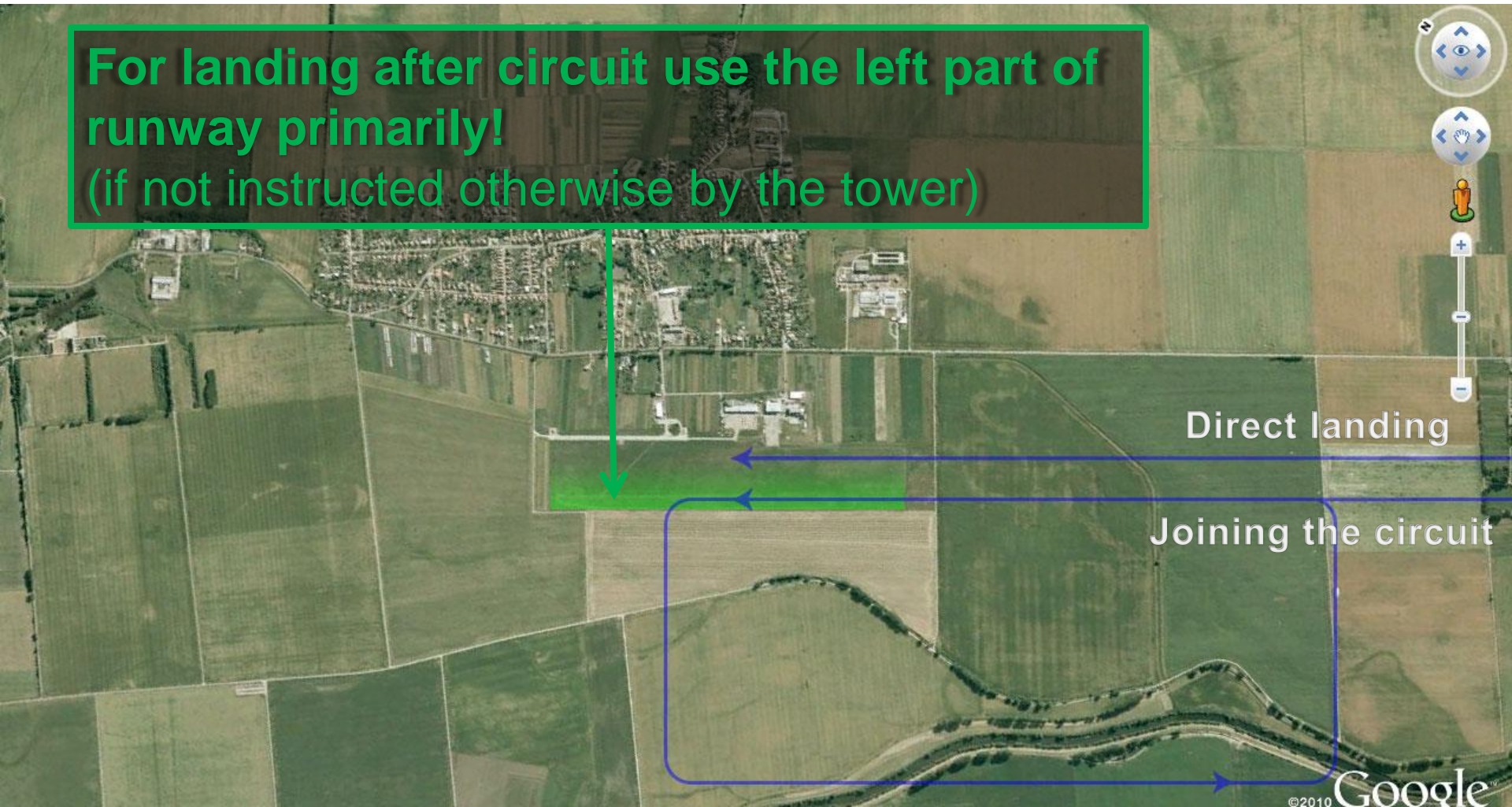


- Announcing of the arrivals will be done on the airport frequency 123.400 MHz. For announcing the arrivals the following phrases shall be used at the place specified at briefing:
 - ▣ [Competition number], [distance to finish line in km] - As soon as possible at 10km final or last control point of the task used for aligning the sailplanes in the same direction for the final.
- More information about finishing procedures in Local procedures

Arrivals 33



For landing after circuit use the left part of runway primarily!
(if not instructed otherwise by the tower)



Arrivals 15



For landing after circuit use the right part of runway primarily!
(if not instructed otherwise by the tower)

Direct landing

Joining the circuit

Delivering IGC files



- Competitors shall download IGC files from the FRs and deliver them:
 - ▣ By uploading via website
 - ▣ Stored on standard medium (SD card, USB stick, ...) to the Info office

- **All Flight logs submitted must include Pilot ID and Contest Number in the IGC file**
- More information about flight documentation in Local procedures

www.pribinacup.sk

We are looking forward to see you in Nitra.

