



INTERNATIONAL GLIDING COMPETITION

# PRIBINACUP 2022

APRIL 15 - 23, 2022 NITRA, SLOVAKIA

## Self Briefing

[www.pribinacup.sk](http://www.pribinacup.sk)

# General



- Welcome to the self briefing for the 20th edition of Pribina Cup – International Easter Gliding Competition
- This document is an attachment of Local procedures of Pribina Cup 2022

# Contents



1. Airport characteristics
2. Airport organization
3. Grid
4. Takeoff procedures
5. Finishing procedures
6. Delivering flight documentation

# Airport Nitra



- Airport Nitra (**LZNI**) has a GPS coordinates:  
48° 16' 45.93" N  
018° 07' 57.57" E  
ELEV 135 m (443 ft)
- A local information radio frequency: **123.405 MHz („Nitra traffic“)**
- **Operational Runways:**
  - 33 RIGHT / 15 LEFT 1080 m X 50 m grass
  - 33 LEFT / 15 RIGHT 1080 m X 100 m grass
- RWY 1200 m X 200 m

Website: [www.airportnitra.sk](http://www.airportnitra.sk)

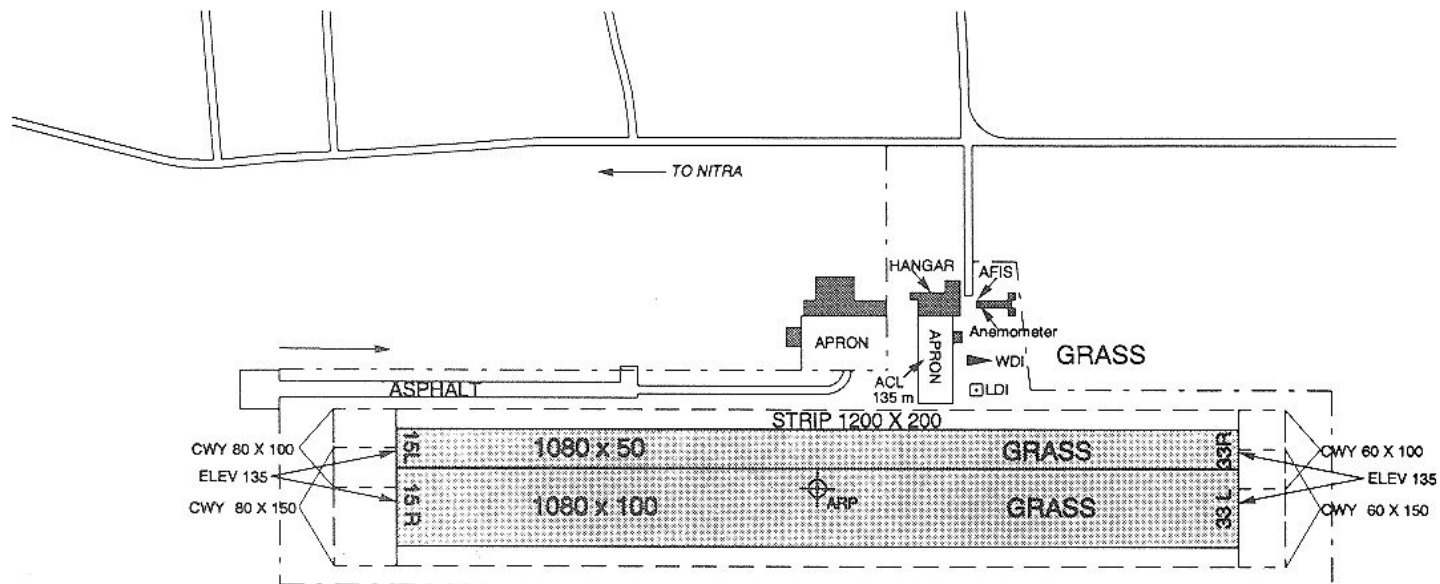
# AERODROME CHART - ICAO

48°16'47" N  
018°08'02" E

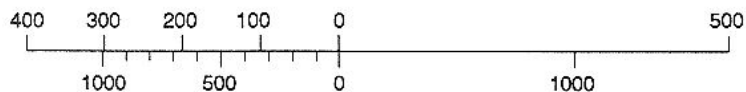
ELEV 135 m

NITRA

VAR 2°E 1996  
ANNUAL RATE  
OF CHANGE 4"E



SCALE 1:10 000  
METRES



FEET

RWY	TRUE BEARING	THR	BEARING STRENGTH
33 R	325°	48°16'57" N 018°08'19" E	5700 kg / 0,7 MPa
33 L	325°	48°16'50" N 018°08'19" E	
15 R	145°	48°16'59" N 018°07'42" E	
15 L	145°	48°16'52" N 018°07'42" E	

# Airport organization



# Airport organization



# Grid runway 33



1. NE grid (15m, 20m, Open)
2. SW grid (Club)
3. re-landing



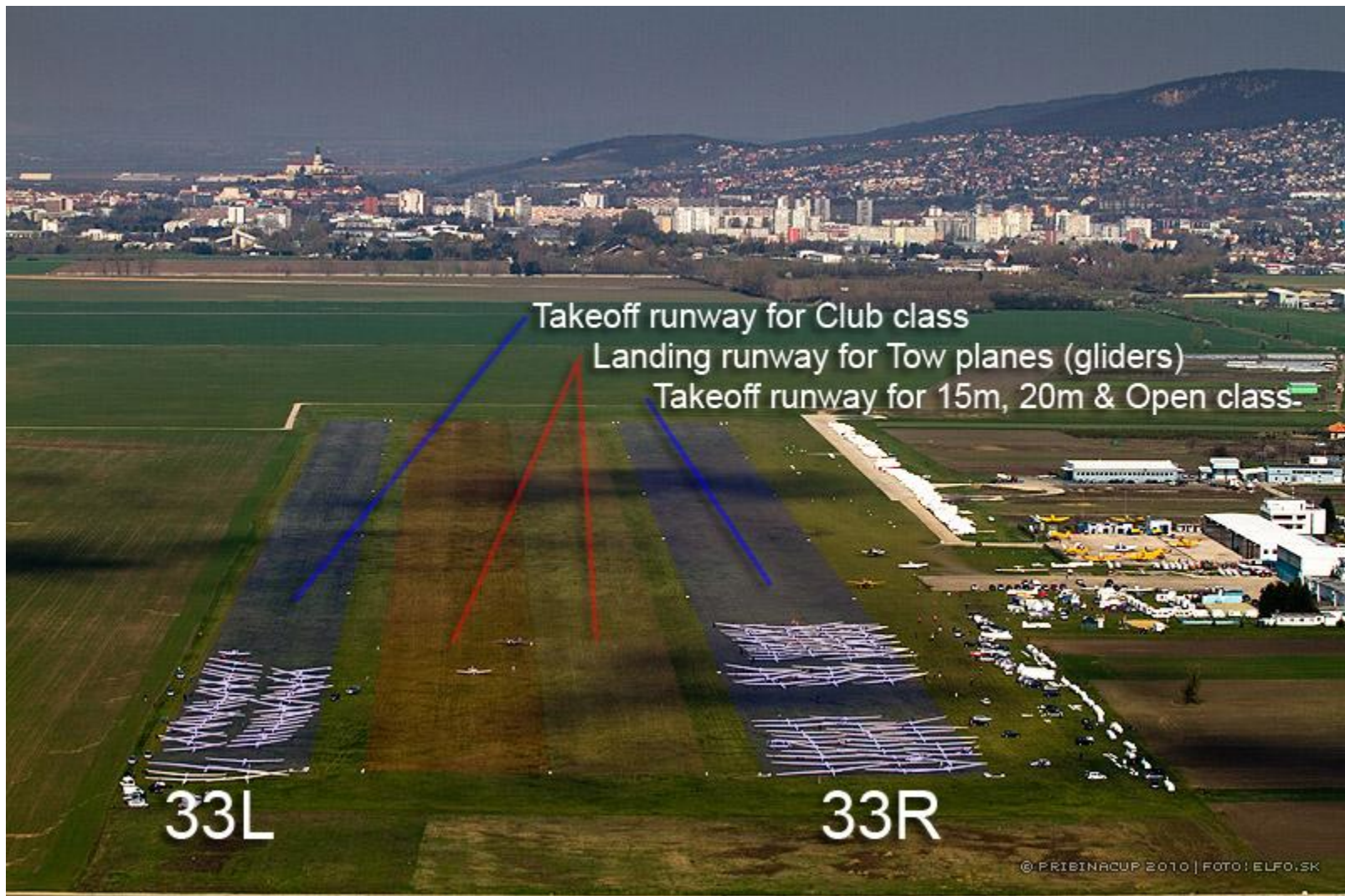
1

3

33

2





# Grid runway 15



1. NE grid (15m, 20m, Open)
2. SW grid (Club)
3. re-landing



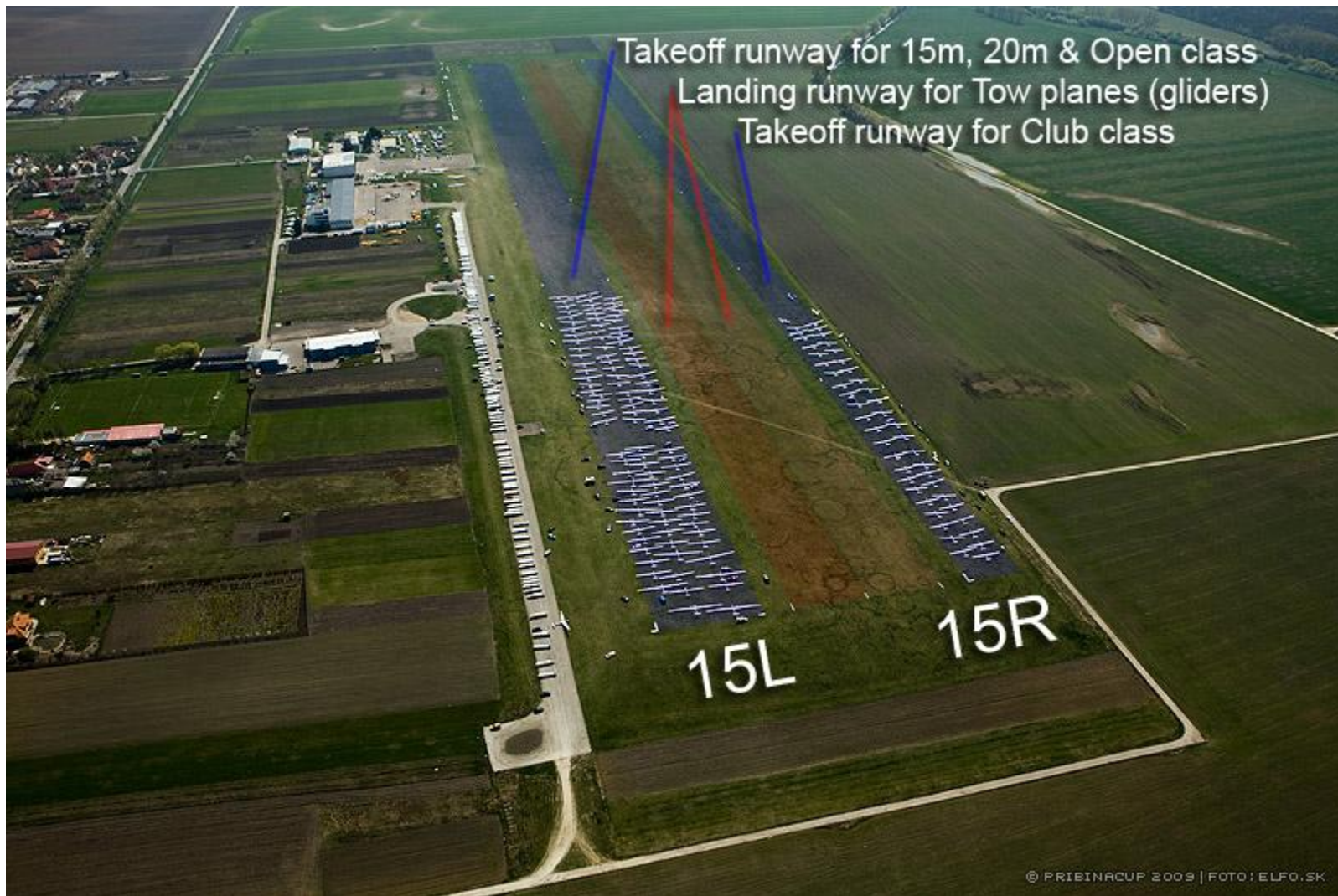
15

3



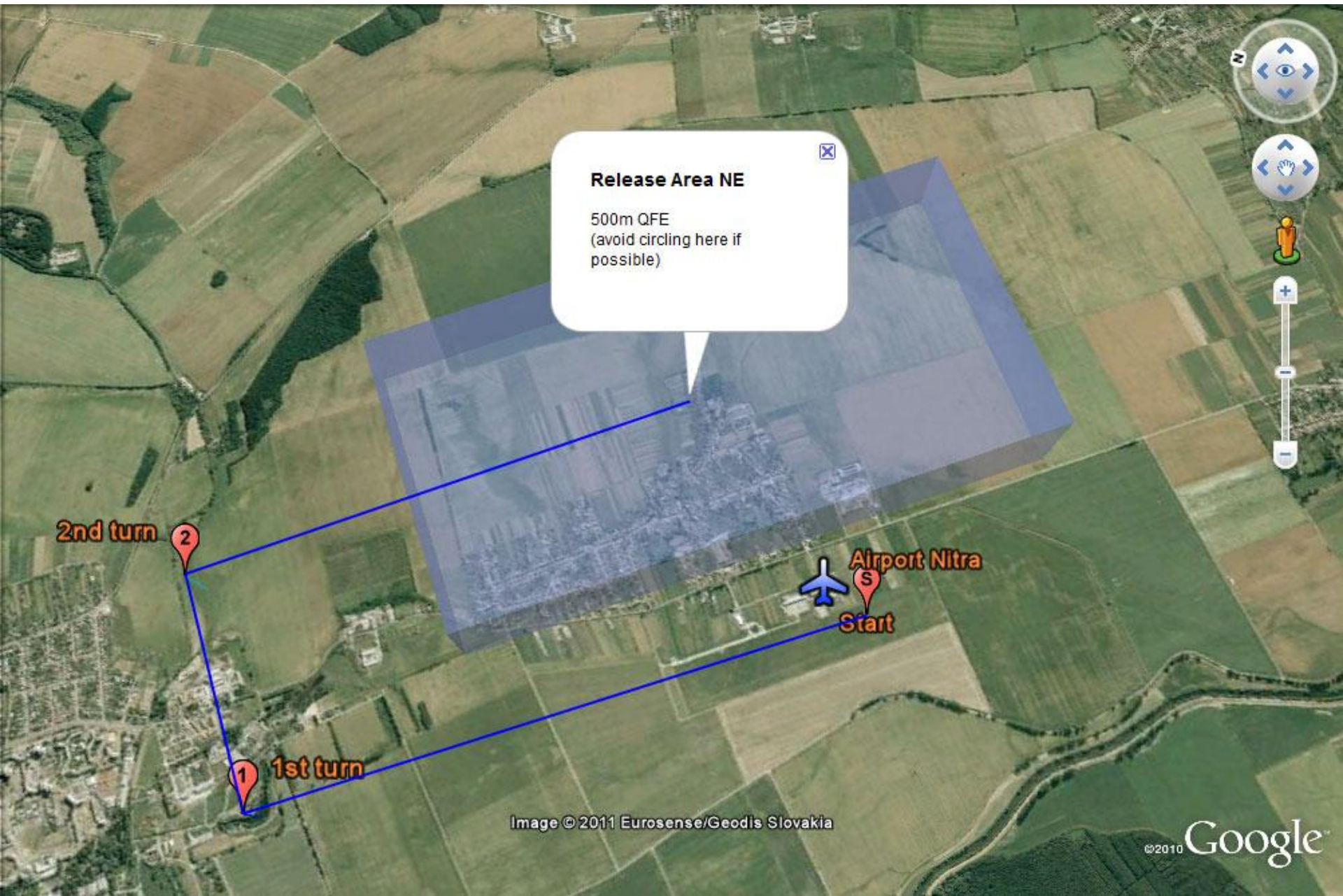
2







# Takeoff from runway 33: 15m, 20m Multi-Seat & Open class



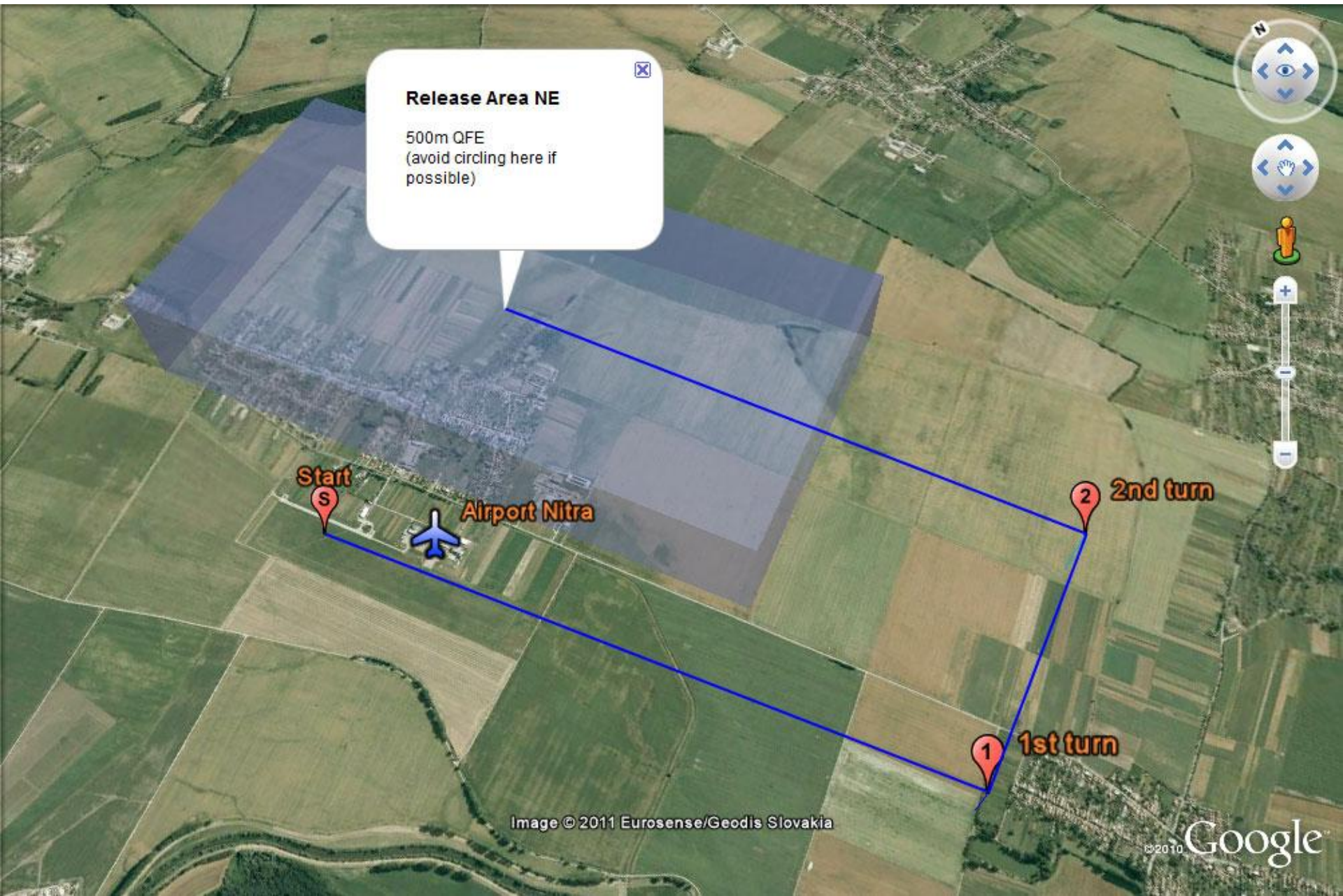


# Takeoff from runway 33: Club class





# Takeoff from runway 15: 15m, 20m Multi-Seat & Open class





# Takeoff from runway 15: Club class



# Finishing procedures



- Announcing of arrivals will be done on the airport frequency 123.405 MHz. For announcing arrivals the following phrases shall be used at the place specified at briefing:
  - [Competition number], [distance to the airport in km] - As soon as possible at 10km final or last control point of the task used for aligning the sailplanes in the same direction for the final.
- More information about finishing procedures is in the Local Procedures



# Arrivals 33



For landing after circuit use the left part of runway primarily!  
(if not instructed otherwise by the tower)

Direct landing

Joining the circuit



# Arrivals 15



For landing after circuit use the right part of runway primarily!  
(if not instructed otherwise by the tower)

Direct landing

Joining the circuit

# Delivering IGC files



- It is required to download IGC files **by the competitors**
- There are two ways how to deliver the file:
  - Upload via form on the official website at URL: [www.pribinacup.sk/2022/igc-upload](http://www.pribinacup.sk/2022/igc-upload) (recommended)
  - Alternatively attach it to an email and send to [igc@pribinacup.sk](mailto:igc@pribinacup.sk)
- Note: We **DO NOT** accept any storage devices
- **All flight logs submitted must include Pilot ID and Contest Number in the IGC file**



[www.pribinacup.sk](http://www.pribinacup.sk)

**We are looking forward to see you in Nitra.**