



INTERNATIONAL GLIDING COMPETITION
PRIBINACUP 2024
MARCH 29 - APRIL 6, 2024 NITRA, SLOVAKIA

Self Briefing

General



- Welcome to the self briefing for the 22nd edition of Pribina Cup – International Easter Gliding Competition
- This document is an attachment of Local procedures of Pribina Cup 2024

Contents



1. Airport characteristics
2. Airport organization
3. Grid
4. Takeoff procedures
5. Finishing procedures
6. Delivering flight documentation

Airport Nitra

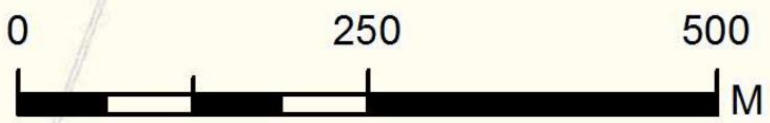


- Airport Nitra (**LZNI**) has a GPS coordinates:
48° 16' 45.93" N
018° 07' 57.57" E
ELEV 135 m (443 ft)

- A local information radio frequency: **123.405 MHz („Nitra traffic“)**

- **Operational Runways:**
 - 33 RIGHT / 15 LEFT 1080 m X 50 m grass
 - 33 LEFT / 15 RIGHT 1080 m X 100 m grass
- RWY 1200 m X 200 m

Website: www.airportnitra.sk



- building
- boarding area
- parachute service area
- parachute jumping area

Airport organization



1a

1b

- 1a. Main access road
- 1b. Access road to trailers
- 2. Trailers and Gliders
- 3. Runway

2

3

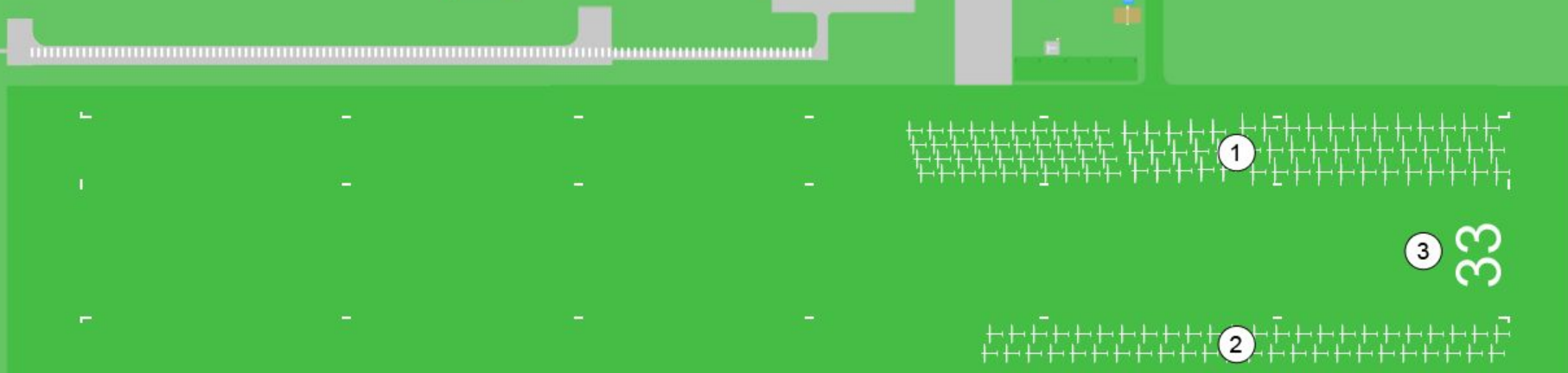
Airport organization

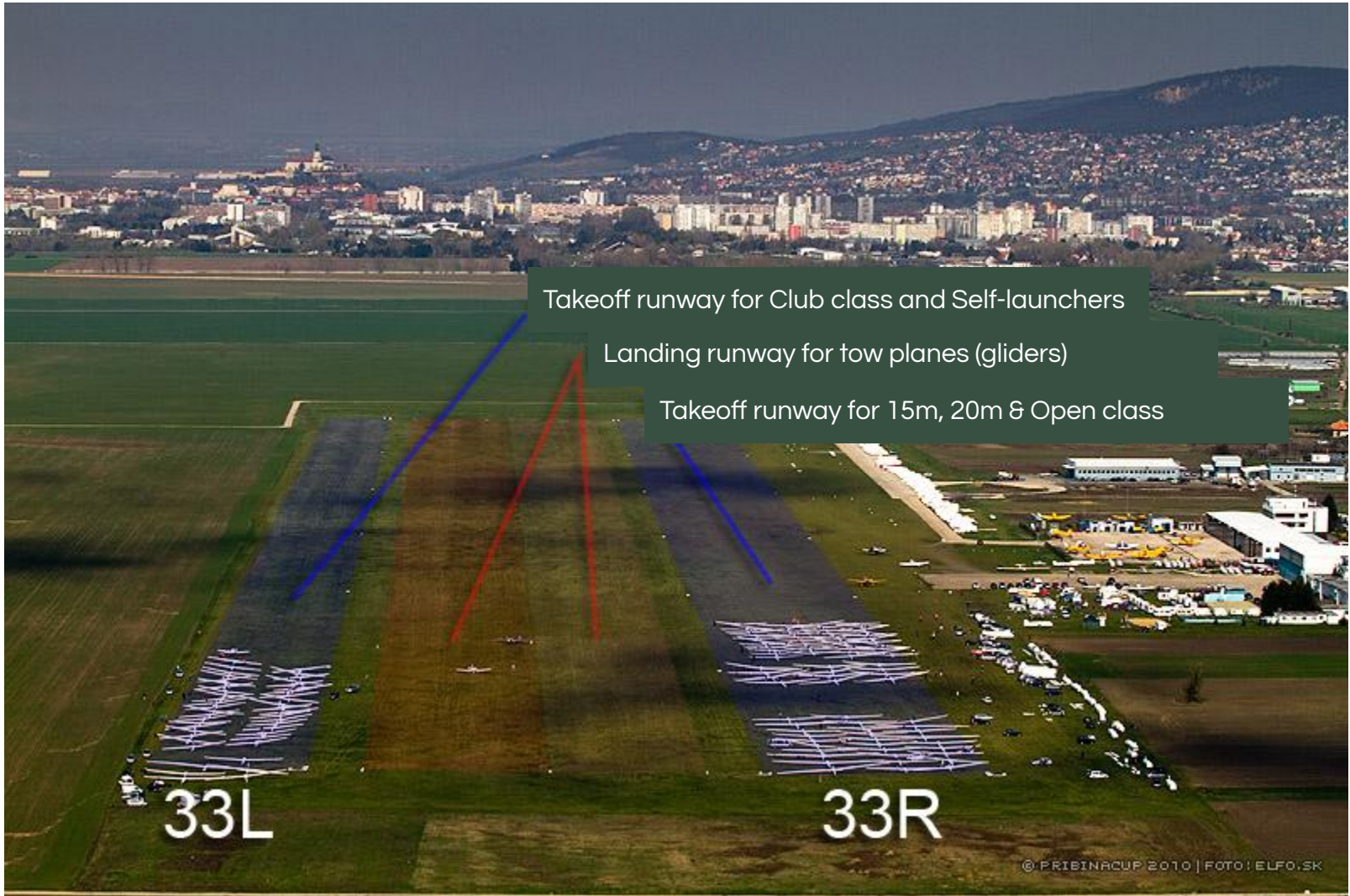


Grid runway 33



1. NE grid (15m, 20m, Open)
2. SW grid (Club and self-launchers)
3. Re-landing





Takeoff runway for Club class and Self-launchers

Landing runway for tow planes (gliders)

Takeoff runway for 15m, 20m & Open class

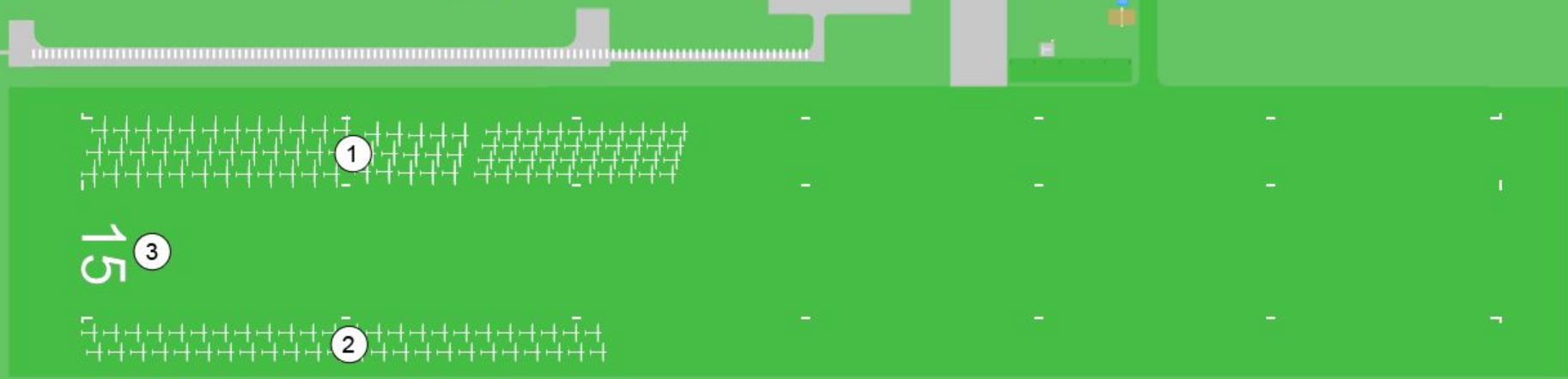
33L

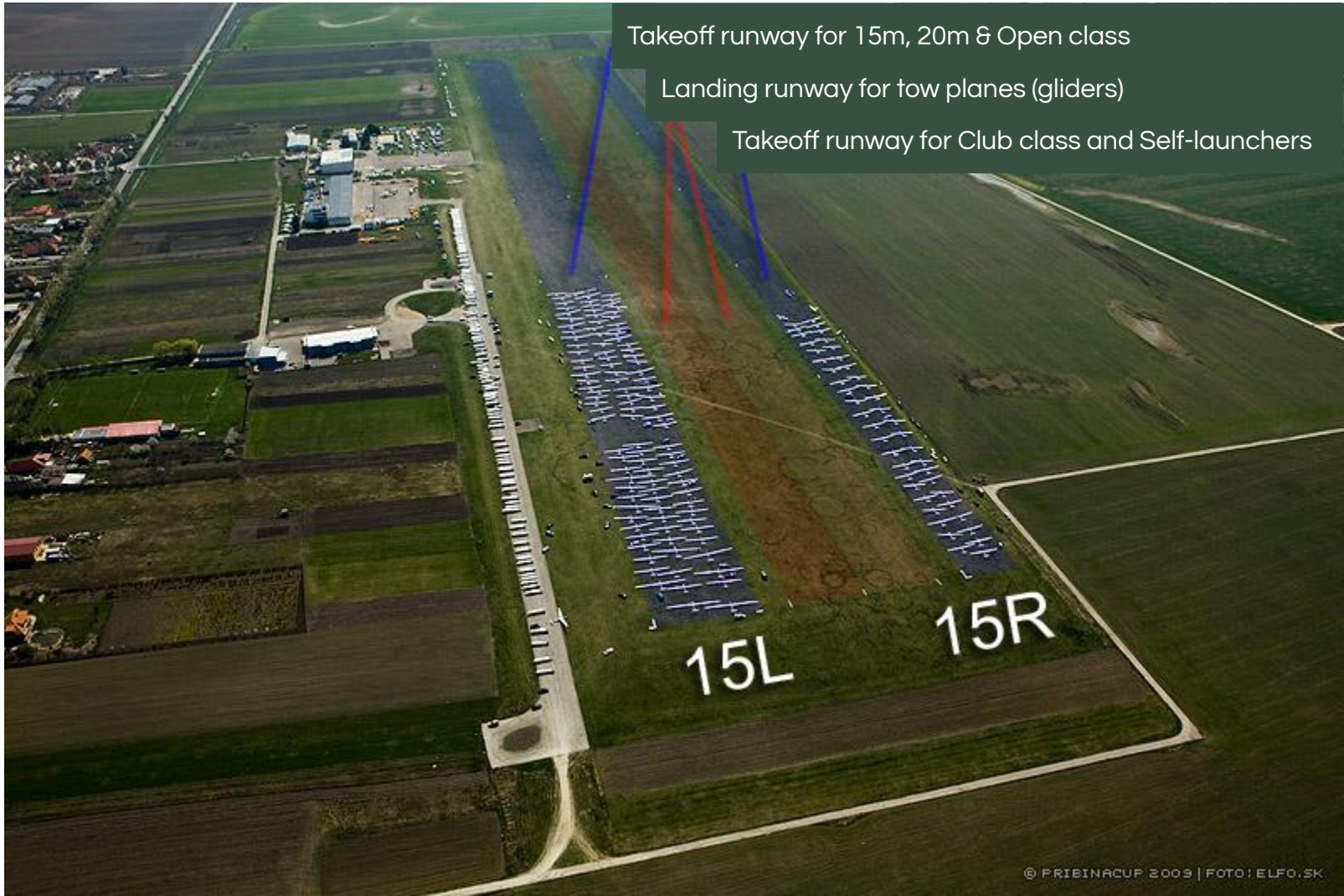
33R

Grid runway 15



1. NE grid (15m, 20m, Open)
2. SW grid (Club and self-launchers)
3. Re-landing





Takeoff runway for 15m, 20m & Open class

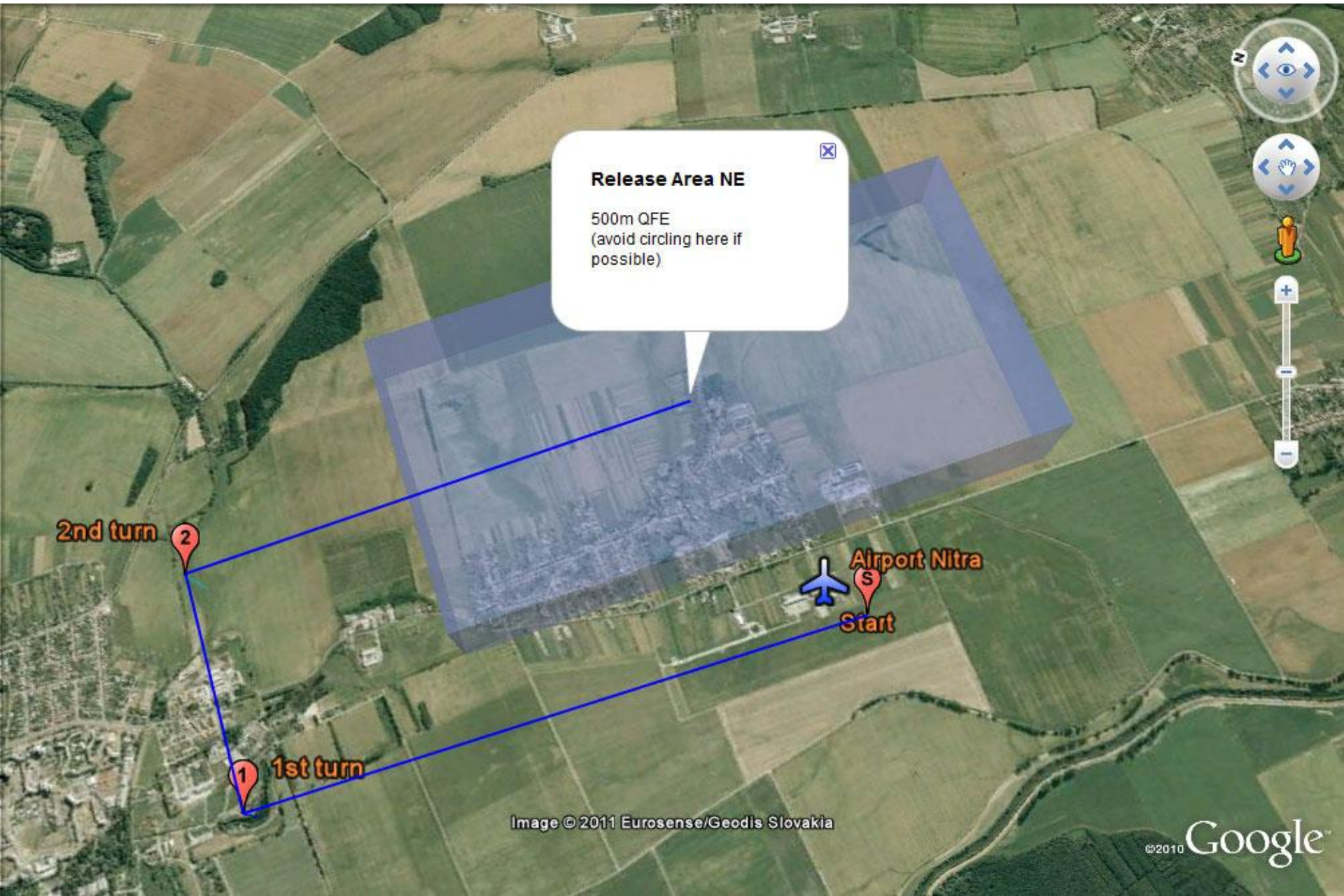
Landing runway for tow planes (gliders)

Takeoff runway for Club class and Self-launchers

15L

15R

Takeoff from runway 33: 15m, 20m Multi-Seat & Open class



Release Area NE

500m QFE
(avoid circling here if possible)

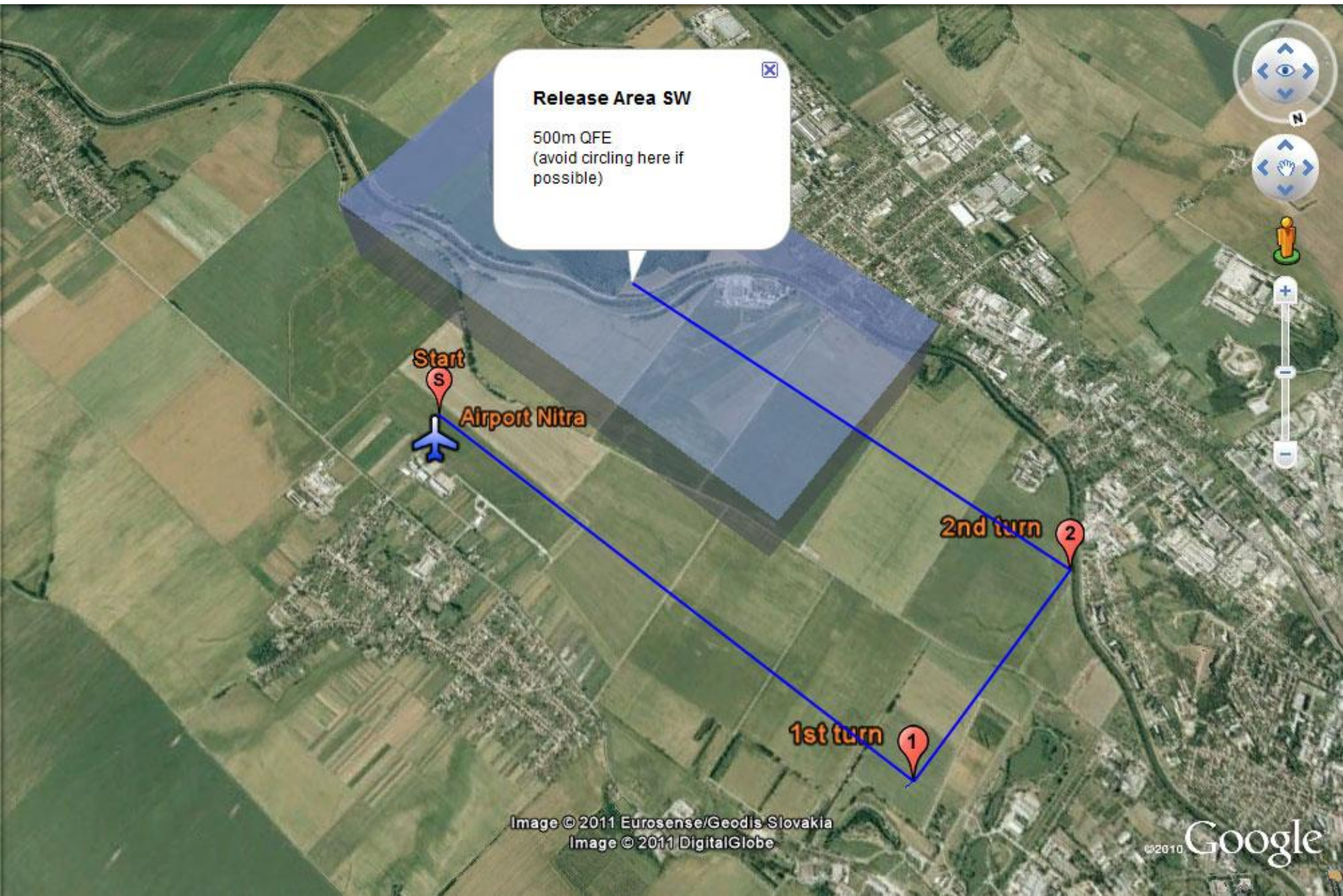
2nd turn 2

1st turn 1

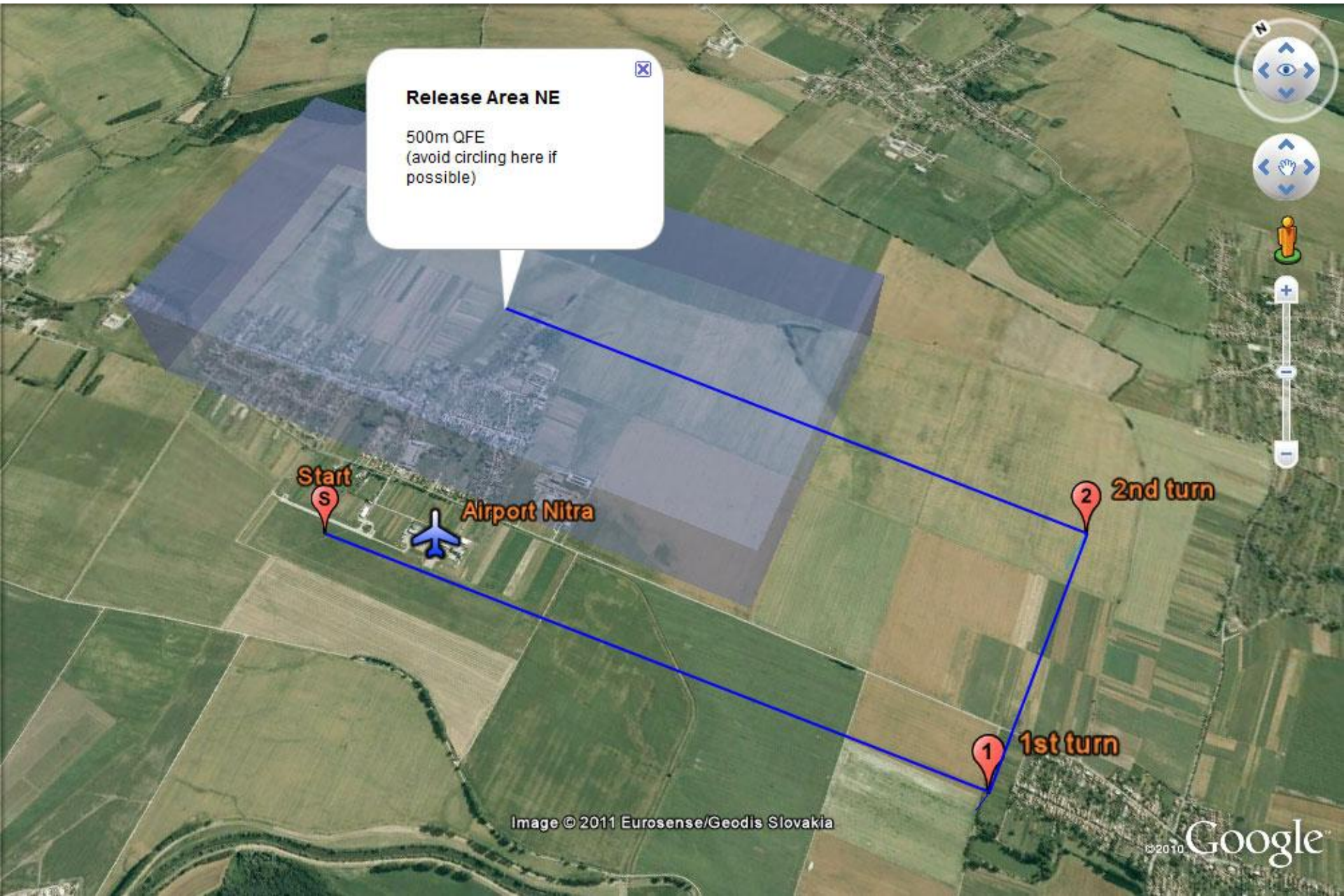
Airport Nitra

Start

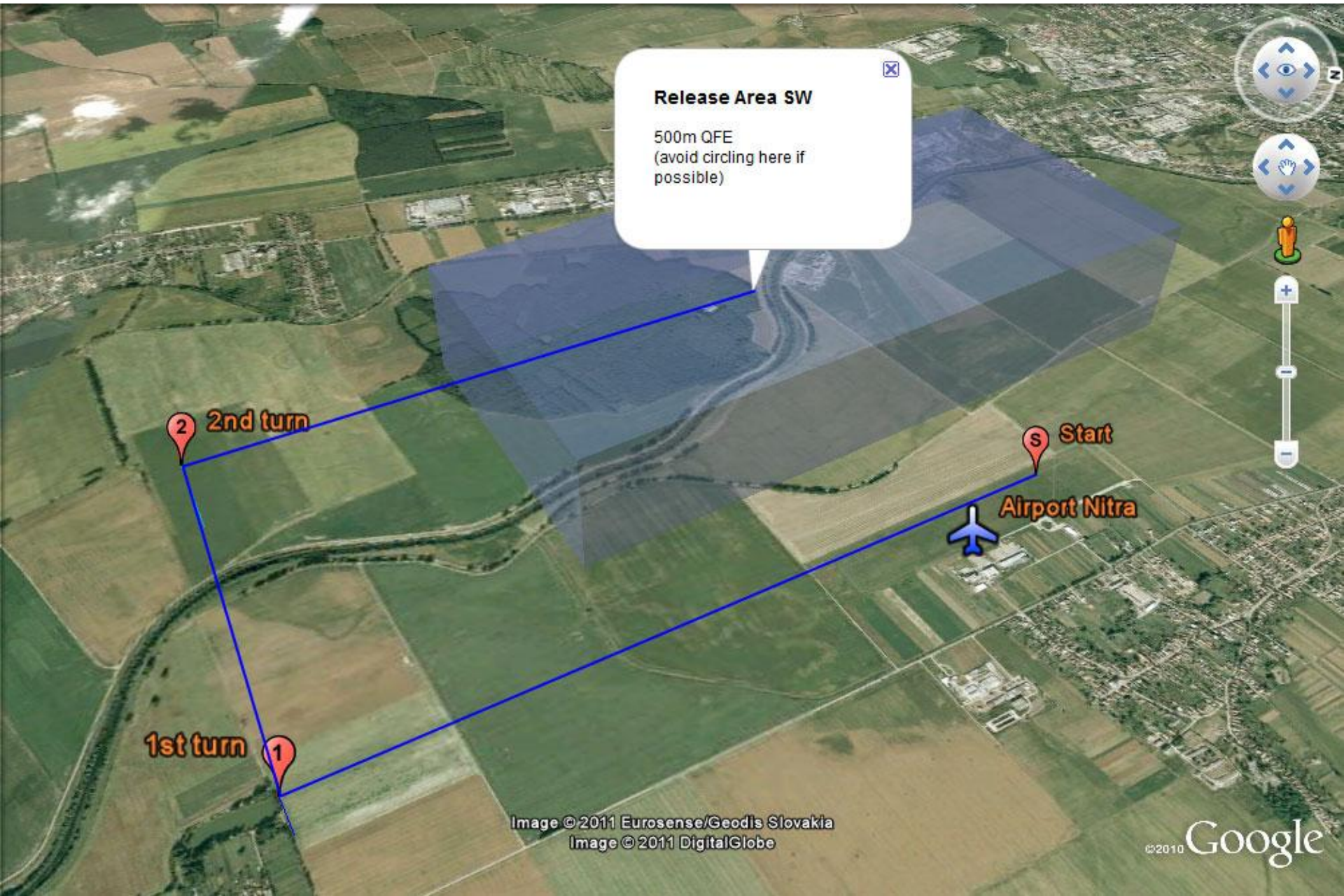
Takeoff from runway 33: Club class



Takeoff from runway 15: 15m, 20m Multi-Seat & Open class



Takeoff from runway 15: Club class



In-flight relaunch



Second or third in-flight relaunch by using own MoP is possible if:

- ❑ Pilot **requests relaunch** (@ downwind) on 123.405
- ❑ **Receives approval** via 123.405.
- ❑ **No or negative reply = continue normal landing**
(ref. Annex A 7.3.1.c)
- ❑ **Positive reply**, follow the **same procedure as a self-launching** glider in your class.

Finishing procedures



- Announcing of arrivals will be done on the airport frequency 123.405 MHz. For announcing arrivals the following phrases shall be used at the place specified at briefing:
 - [Competition number], [distance to the airport in km] - As soon as possible at 10km final or last control point of the task used for aligning the sailplanes in the same direction for the final.
- More information about finishing procedures is in the Local Procedures

Finish ring



- 5 km radius from Nitra Aerodrome Reference Point
- Minimum height for crossing the finish is 385 m QNH

Arrivals 33



For landing after circuit use the left part of runway primarily!
(if not instructed otherwise by the tower)

Direct landing

Joining the circuit

Arrivals 15



For landing after circuit use the right part of runway primarily!
(if not instructed otherwise by the tower)

Direct landing

Joining the circuit

Delivering IGC files



- It is required to download IGC files **by the competitors**
- There are two ways how to deliver the file:
 - Upload via form on the official website at URL: www.pribinacup.sk/2024/igc-upload (recommended)
 - Alternatively attach it to an email and send to igc@pribinacup.sk
- Note: We **DO NOT** accept any storage devices
- **All flight logs submitted must include Pilot ID and Contest Number in the IGC file**



www.pribinacup.sk

We are looking forward to see you in Nitra.