



# Self Briefing

# General



- Welcome to the self briefing for the 23rd edition of Pribina Cup – International Easter Gliding Competition
- This document is an attachment of Local procedures of Pribina Cup 2025

# Contents



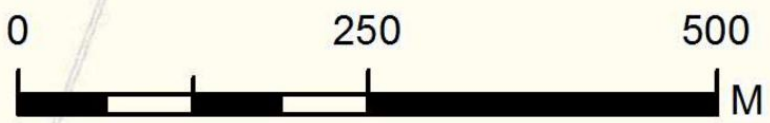
1. Airport characteristics
2. Airport organization
3. Grid
4. Takeoff procedures
5. Finishing procedures
6. Delivering flight documentation
7. Airspace

# Airport Nitra



- Airport Nitra (**LZNI**) has a GPS coordinates:  
48° 16' 45.93" N  
018° 07' 57.57" E  
ELEV 135 m (443 ft)
  
- A local information radio frequency: **123.405 MHz („Nitra traffic“)**
  
- **Operational Runways:**
  - 33 RIGHT / 15 LEFT 1080 m X 50 m grass
  - 33 LEFT / 15 RIGHT 1080 m X 100 m grass
- RWY 1200 m X 200 m

Website: [www.airportnitra.sk](http://www.airportnitra.sk)



- building
- boarding area
- parachute service area
- parachute jumping area

# Airport organization



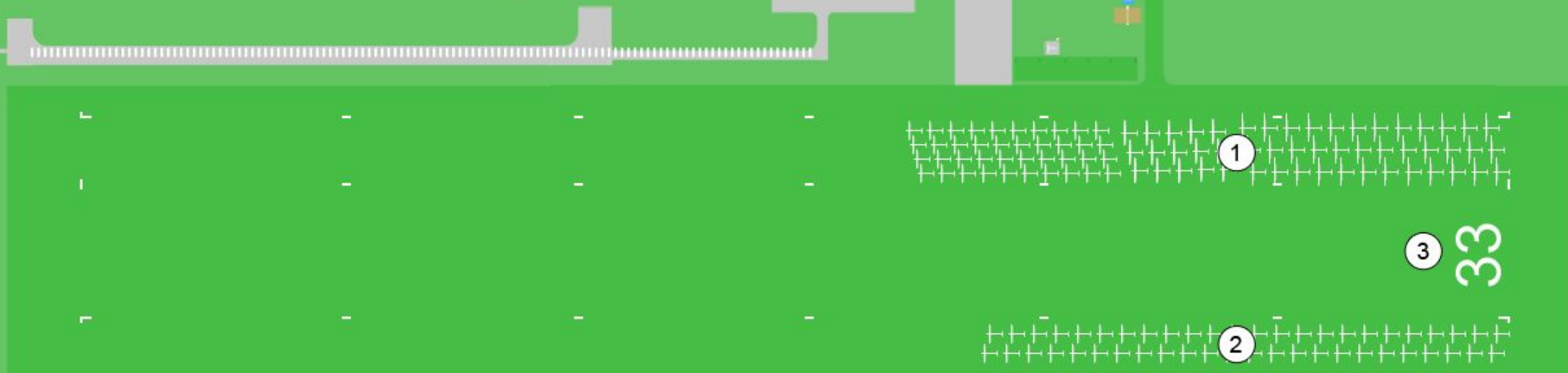
# Airport organization



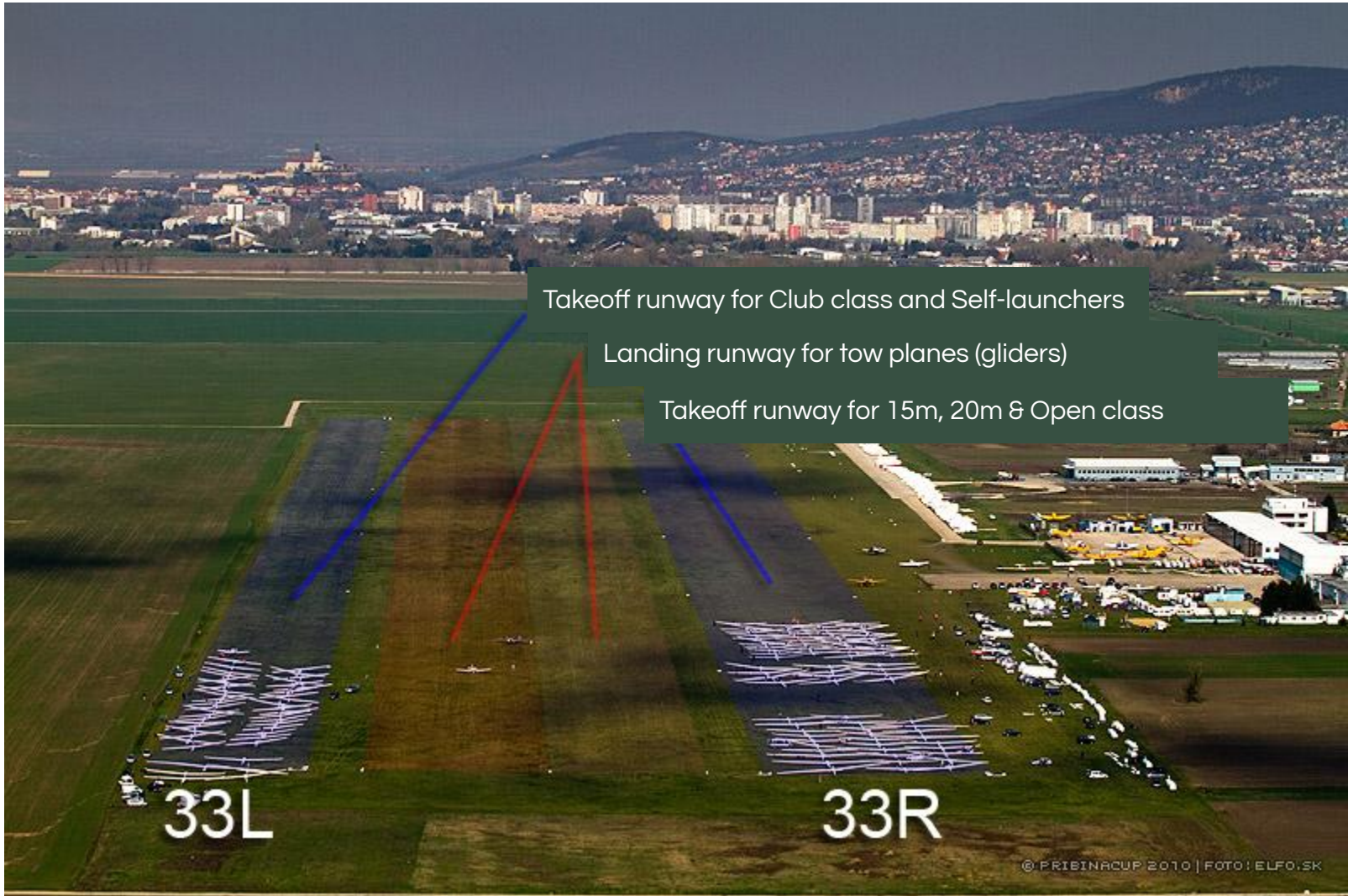
# Grid runway 33



1. NE grid (15m, 20m, Open)
2. SW grid (Club and self-launchers)
3. Re-landing







Takeoff runway for Club class and Self-launchers

Landing runway for tow planes (gliders)

Takeoff runway for 15m, 20m & Open class

33L

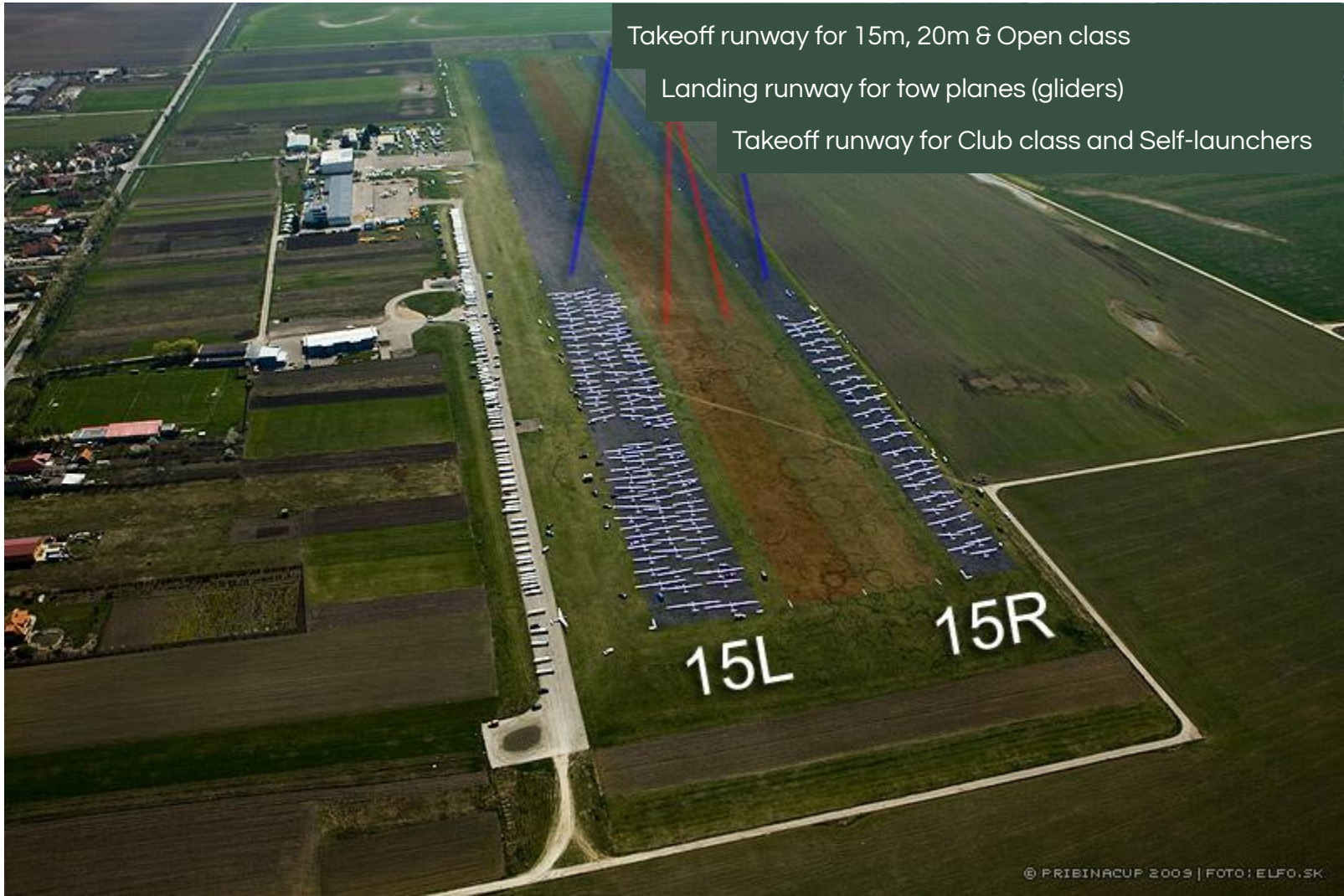
33R

# Grid runway 15



1. NE grid (15m, 20m, Open)
2. SW grid (Club and self-launchers)
3. Re-landing





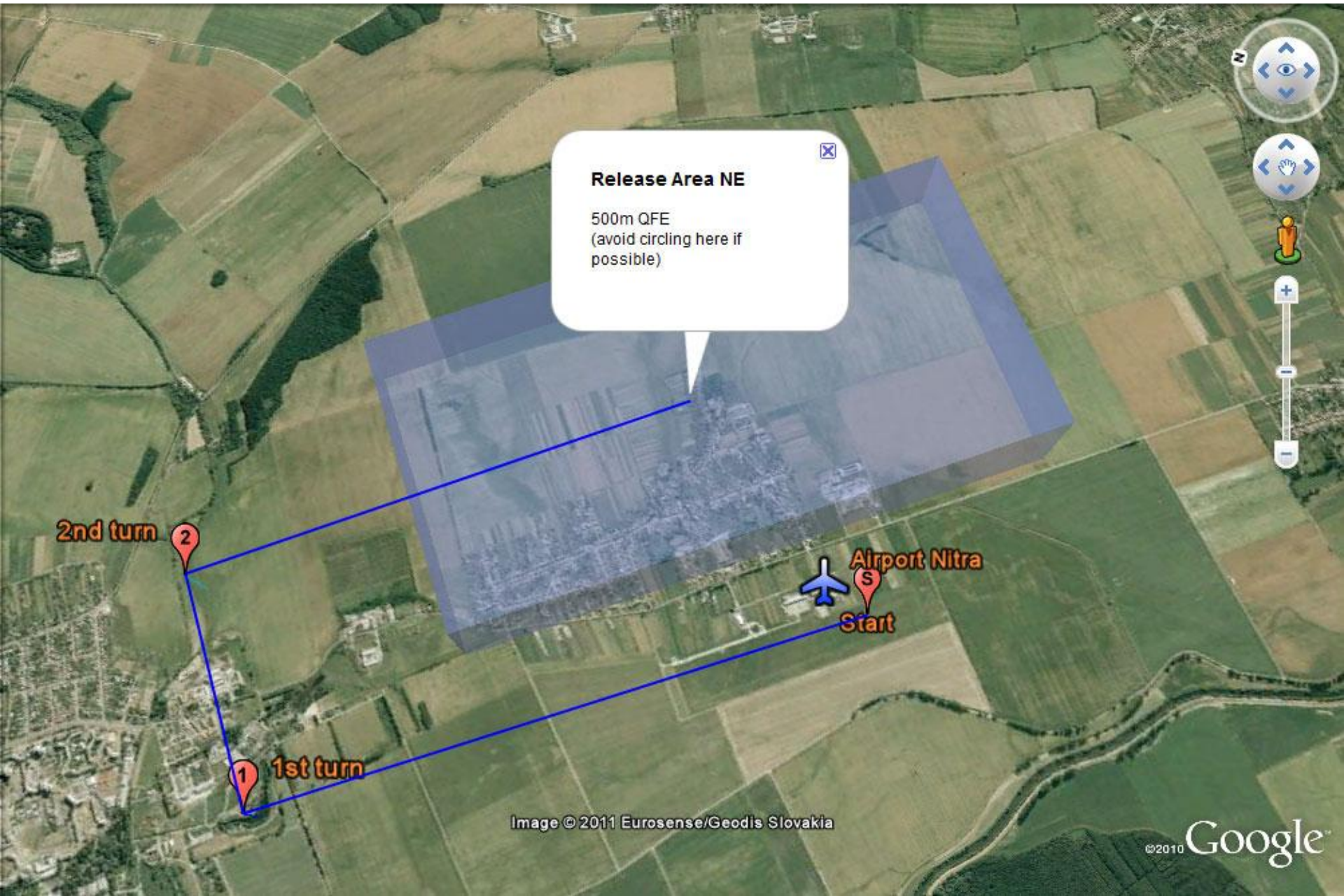
Takeoff runway for 15m, 20m & Open class

Landing runway for tow planes (gliders)

Takeoff runway for Club class and Self-launchers

15L 15R

# Takeoff from runway 33: 15m, 20m Multi-Seat & Open class



## Release Area NE

500m QFE  
(avoid circling here if possible)

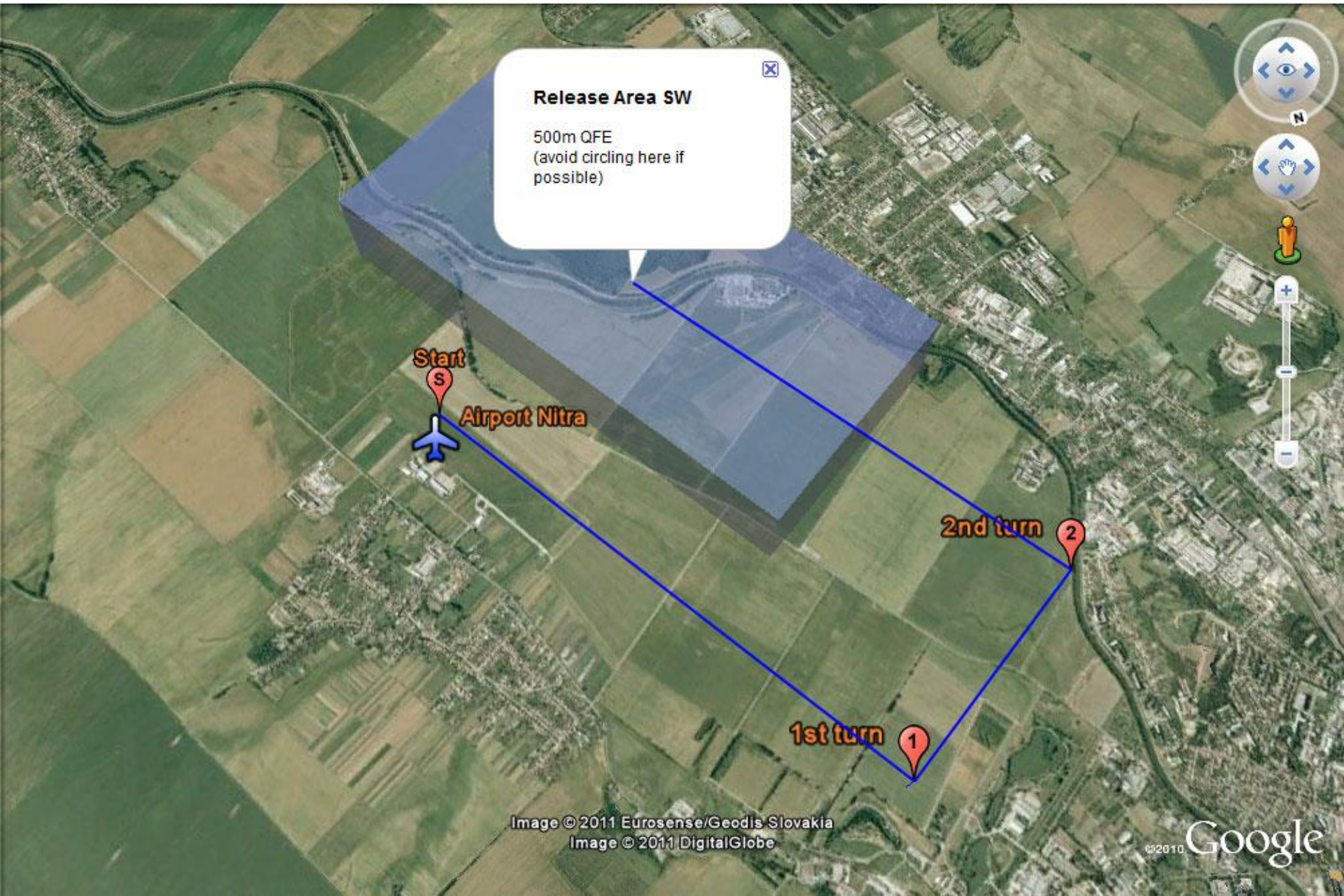
2nd turn 2

1st turn 1

Airport Nitra

Start

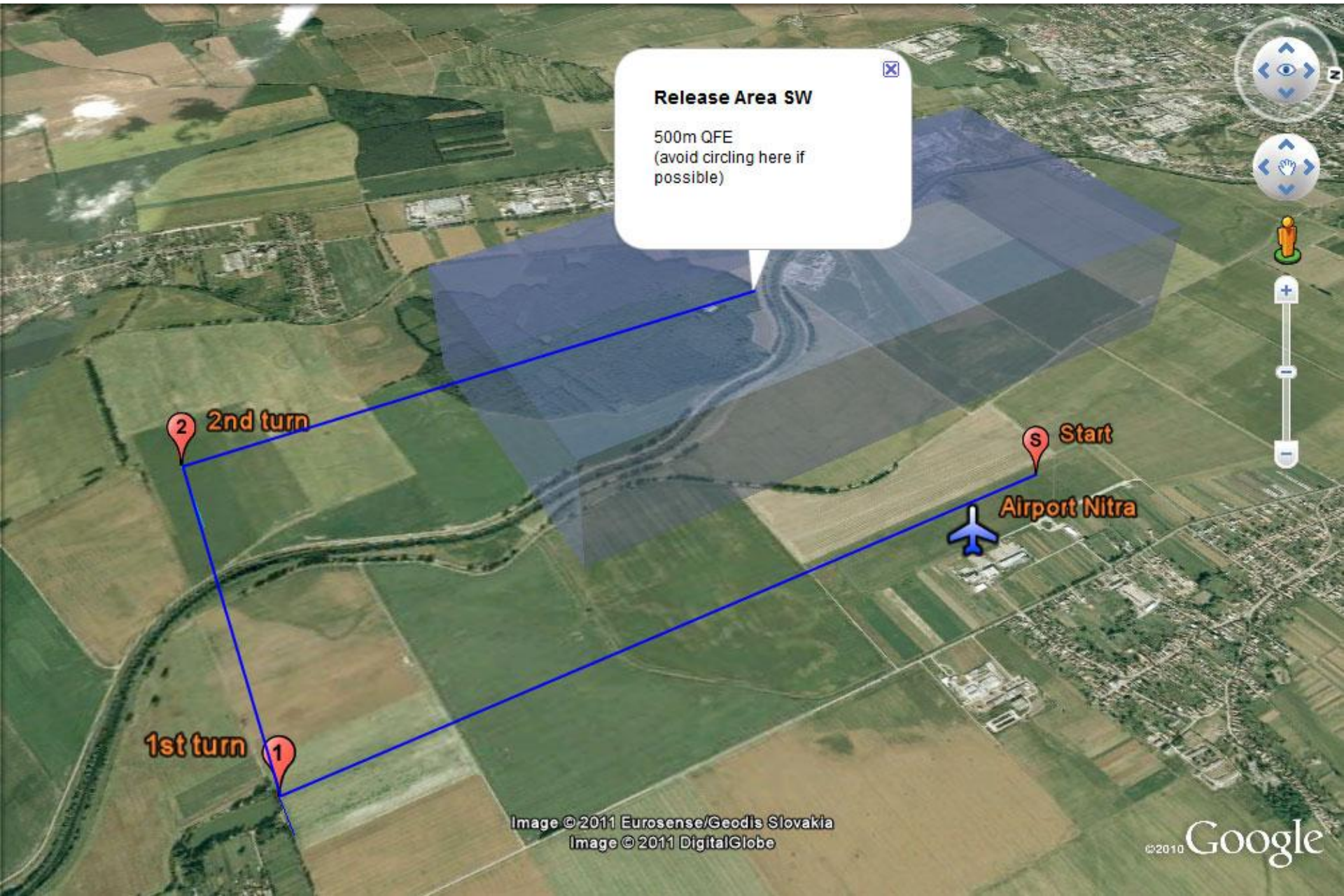
# Takeoff from runway 33: Club class



# Takeoff from runway 15: 15m, 20m Multi-Seat & Open class



# Takeoff from runway 15: Club class



**Release Area SW**  
500m QFE  
(avoid circling here if possible)

2 2nd turn

S Start

Airport Nitra

1 1st turn

# In-flight relaunch



Second or third in-flight relaunch by using own MoP is possible if:

- Pilot **requests relaunch** (@ downwind) on 123.405
- **Receives approval** via 123.405.
- **No or negative reply = continue normal landing** (ref. Annex A 7.3.1.c )
- **Positive reply** , follow the **same procedure as a self-launching** glider in your class.



# Finishing procedures



- Announcing of arrivals will be done on the airport frequency 123.405 MHz. For announcing arrivals the following phrases shall be used at the place specified at briefing:
  - [Competition number], [distance to the airport in km] - As soon as possible at 10km final or last control point of the task used for aligning the sailplanes in the same direction for the final.
- More information about finishing procedures is in the Local Procedures

# Finish ring



- 5 km radius from Nitra Aerodrome Reference Point
- Minimum height for crossing the finish is 385 m QNH

# Arrivals 33



For landing after circuit use the left part of runway primarily!  
(if not instructed otherwise by the tower)

Direct landing

Joining the circuit

# Arrivals 15



For landing after circuit use the right part of runway primarily!  
(if not instructed otherwise by the tower)

Direct landing

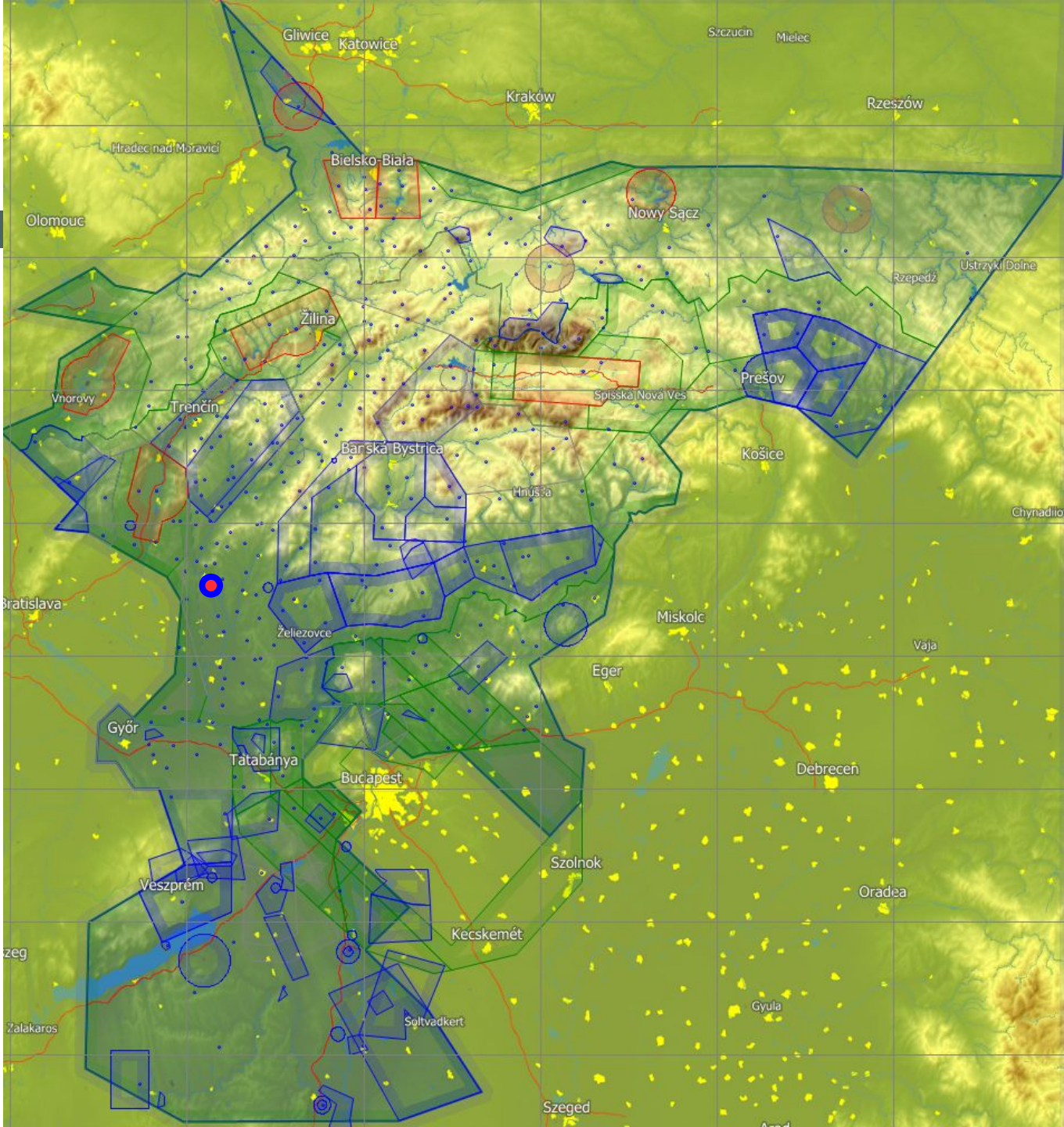
Joining the circuit

# Delivering IGC files



- It is required to download IGC files **by the competitors**
- There are two ways how to deliver the file:
  - Upload via form on the official website at URL: [www.pribinacup.sk/2025/igc-upload](http://www.pribinacup.sk/2025/igc-upload) (recommended)
  - Alternatively attach it to an email and send to [igc@pribinacup.sk](mailto:igc@pribinacup.sk)
- Note: We **DO NOT** accept any storage devices
- **All flight logs submitted must include Pilot ID and Contest Number in the IGC file**

# Airspace



[www.pribinacup.sk](http://www.pribinacup.sk)

**We are looking forward to see you in Nitra.**